

2006

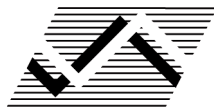
local government area
crime report series

woollahra



**WOOLLAHRA
LOCAL GOVERNMENT AREA
CRIME REPORT
2006**

Melissa Burgess and Arvind Varshney



NSW Bureau of Crime
Statistics and Research

2007

Published by the NSW Bureau of Crime Statistics and Research

NSW Attorney General's Department

Level 8

St James Centre

111 Elizabeth Street

Sydney NSW 2000

AUSTRALIA

Phone: +61 2 9231 9190

Facsimile: +61 2 9231 9187

Email: bcsr@agd.nsw.gov.au

Website: www.bocsar.nsw.gov.au

ISBN: 0 7313 2693 8

INTRODUCTION

This report contains information on police-recorded crime in the Woollahra Local Government Area (LGA). It includes information on:

- The spatial distribution of crime within the LGA
- Recent trends in the 17 major offence categories
- Temporal variation in crime by time of day, day of week and month
- The age and gender of victims and suspected offenders
- The premises types on which crimes occurred
- The involvement of alcohol in crime.

An important aspect of this report is the inclusion of hotspot maps showing the distribution of crime within the LGA. We have provided this information in order to both inform local crime prevention efforts and give members of the public a better understanding of crime in their local neighbourhood.

Unfortunately, the Bureau of Crime Statistics and Research is not able to explain the reasons for the distribution of crime within local areas, nor are we able to advise how to prevent crime in a local area. If you are interested in either of these issues please contact either your local police or the Crime Prevention Division of the NSW Attorney General's Department (www.lawlink.nsw.gov.au/cpd or phone 02 9228 8307).

If you have any questions about this report, or if you wish to provide feedback, please contact the Deputy Director on (02) 9231 9190 or bcsr@agd.nsw.gov.au.

Dr Don Weatherburn
Director
6 August 2007

CONTENTS

| | |
|---------------------------------------------------------|----|
| INTRODUCTION..... | 3 |
| LIST OF FIGURES | 5 |
| LIST OF TABLES | 6 |
| DEFINITIONS AND EXPLANATORY NOTES | 7 |
| 1. Recorded criminal incidents..... | 7 |
| 2. Counting units..... | 7 |
| 3. Counting period..... | 7 |
| 4. Offence classifications..... | 8 |
| 5. Maps | 8 |
| 5.1 Locating criminal incidents | 8 |
| 5.2 Spatial data and software..... | 8 |
| 5.3 Hotspot (kernel density) maps | 8 |
| 5.4 Privacy | 9 |
| 6. Crime by time, day and month | 9 |
| 7. Persons of interest..... | 9 |
| 8. Counting victims and persons of interest | 9 |
| 9. Alcohol related incidents..... | 10 |
| LOCAL AREA CRIME SUMMARY | 11 |
| 10. Overview of recent trends | 11 |
| 11. Crime maps and graphs for selected offences | 12 |
| 11.1 Assault – domestic violence related | 12 |
| 11.2 Assault – non-domestic violence related | 14 |
| 11.3 Assault – non-domestic alcohol related..... | 16 |
| 11.4 Robbery..... | 18 |
| 11.5 Break and enter – dwelling..... | 20 |
| 11.6 Break and enter – non-dwelling | 22 |
| 11.7 Motor vehicle theft..... | 24 |
| 11.8 Steal from motor vehicle | 26 |
| 11.9 Steal from person | 28 |
| 11.10 Steal from dwelling | 30 |
| 11.11 Malicious damage to property..... | 32 |
| 12. Selected offences by premises type..... | 34 |
| 13. Age and gender of victims | 35 |
| 14. Age and gender of persons of interest | 36 |
| 15. Alcohol-related crime..... | 37 |
| APPENDIX 1: OFFENCE CLASSIFICATIONS | 38 |
| APPENDIX 2: SECOND-LEVEL PREMISES TYPE CATEGORIES | 42 |

LIST OF FIGURES

| | |
|----------------------------------------------------------------------------------------------------------|----|
| Figure 1. Proportion of domestic violence related assault incidents by month..... | 12 |
| Figure 2. Proportion of domestic violence related assault incidents by time of day and day of week | 12 |
| Figure 3. Hotspot map for domestic violence related assault incidents..... | 13 |
| Figure 4. Proportion of non-domestic violence related assault incidents by month | 14 |
| Figure 5. Proportion of non-domestic violence related assault incidents by time of day and day of week . | 14 |
| Figure 6. Hotspot map for non-domestic violence related assault incidents..... | 15 |
| Figure 7. Proportion of non-domestic alcohol related assault incidents by month | 16 |
| Figure 8. Proportion of non-domestic alcohol related assault incidents by time of day and day of week .. | 16 |
| Figure 9. Hotspot map for non-domestic alcohol related assault incidents | 17 |
| Figure 10. Proportion of robbery incidents by month | 18 |
| Figure 11. Proportion of robbery incidents by time of day and day of week..... | 18 |
| Figure 12. Hotspot map for robbery incidents | 19 |
| Figure 13. Proportion of break and enter (dwelling) incidents by month | 20 |
| Figure 14. Proportion of break and enter (dwelling) incidents by time of day and day of week | 20 |
| Figure 15. Hotspot map for break and enter (dwelling) incidents | 21 |
| Figure 16. Proportion of break and enter (non-dwelling) incidents by month | 22 |
| Figure 17. Proportion of break and enter (non-dwelling) incidents by time of day and day of week..... | 22 |
| Figure 18. Hotspot map for break and enter (non-dwelling) incidents | 23 |
| Figure 19. Proportion of motor vehicle theft incidents by month..... | 24 |
| Figure 20. Proportion of motor vehicle theft incidents by time of day and day of week..... | 24 |
| Figure 21. Hotspot map for motor vehicle theft incidents..... | 25 |
| Figure 22. Proportion of steal from motor vehicle incidents by month | 26 |
| Figure 23. Proportion of steal from motor vehicle incidents by time of day and day of week | 26 |
| Figure 24. Hotspot map for steal from motor vehicle incidents..... | 27 |
| Figure 25. Proportion of steal from person incidents by month..... | 28 |
| Figure 26. Proportion of steal from person incidents by time of day and day of week | 28 |
| Figure 27. Hotspot map for steal from person incidents..... | 29 |
| Figure 28. Proportion of steal from dwelling incidents by month | 30 |
| Figure 29. Proportion of steal from dwelling incidents by time of day and day of week | 30 |
| Figure 30. Hotspot map for steal from dwelling incidents..... | 31 |
| Figure 31. Proportion of malicious damage to property incidents by month..... | 32 |
| Figure 32. Proportion of malicious damage to property incidents by time of day and day of week | 32 |
| Figure 33. Hotspot map for malicious damage to property incidents..... | 33 |

LIST OF TABLES

| | |
|----------------------------------------------------------------------------------------------------------------------------------------------------------------|----|
| Table 1. Number of incidents recorded in the Woollahra LGA, 24-and 60 month trend change for the 17 major offence types | 11 |
| Table 2. Number of incidents of selected offences recorded by NSW Police in the Woollahra LGA, by premises type, 2006..... | 34 |
| Table 3. Age and gender of victims of selected offences recorded by NSW Police in the Woollahra LGA, 2006 | 35 |
| Table 4. Age and gender of persons of interest (POIs) proceeded against by police in relation to criminal incidents occurring in the Woollahra LGA, 2006 | 36 |
| Table 5. Number and proportion of selected offences flagged as alcohol related by police in the Woollahra LGA, 2006 | 37 |

DEFINITIONS AND EXPLANATORY NOTES

The data in this crime report were extracted from the NSW Police Force's Computerised Operational Policing System (COPS). Because COPS is a live database, data can vary according to the time at which they are extracted.

In this report:

- The counting units are recorded *criminal incidents* rather than recorded *offences* (except for murder incidents, which count victims, see note 2) and
- Unless specifically stated, the data are categorised by date of *reporting* to police (or date of detection by police) rather than by date of *occurrence* of the incident.

1. RECORDED CRIMINAL INCIDENTS

A recorded criminal incident is defined as an activity detected by or reported to police which:

- involved the same alleged offender(s)
- involved the same alleged victim(s)
- occurred at the one location
- occurred during one uninterrupted period of time
- falls into one offence category and
- falls into one incident type (for example, 'actual', 'attempted', 'conspiracy').

One incident may involve two alleged offenders assaulting the same victim. This would be recorded as one assault incident. Alternatively, suppose a person reports to police that he found his neighbour in the process of damaging his car and, when confronted, the neighbour assaulted him. For such an event, two criminal incidents would be recorded because two distinct offence types were involved (malicious damage to property and assault) even though the same parties were involved at the same time and in the same place.

Police-recorded crime data provide a useful barometer for monitoring trends and patterns in crime in local areas. Police-recorded crime data are not as useful for estimating the overall level of crime in a particular area (crime victim surveys are more appropriate for this purpose). This is primarily because many criminal incidents are not reported to, or detected by, police. For example, some minor assaults where neither party is injured might not be reported to police.

Irrespective of the way in which recorded crime trends are presented, the administrative nature of COPS data must always be kept in mind when interpreting these trends. Because the COPS database contains only those criminal incidents that are reported to, or detected by, police, trends in recorded crime will reflect movements in the underlying factors that influence the detection, reporting and recording of crime, as well as changes in the true level of crime in the community. Most offences presented in this crime report have been selected because they are less likely to be related to policing activity or public willingness to report crime.

2. COUNTING UNITS

Because of the seriousness of murder and its relatively small numbers, it is considered to be more appropriate to count the number of victims, rather than the number of criminal incidents. Hence, where one murder incident involves a person killing six people, six murder victims are counted in this report. For every other offence, the counting units refer to the number of incidents.

3. COUNTING PERIOD

Criminal incidents are included in the counting period in which they were reported to, or detected by, police. In most cases criminal incidents are recorded on COPS on the day of reporting. It is possible for some updating of data to occur when incidents occurred in the year of interest but were reported some time after the data were extracted. That is, data extracted for a specified period of time (incidents reported in 2006, for example), may differ according to the date of extraction of the data. The data presented in this report were extracted in January 2007.

4. OFFENCE CLASSIFICATIONS

The Bureau recodes the offence categories used by the NSW Police Force to make them broadly consistent with the Australian Standard Offence Classification (ASOC, ABS 1997, *Australian Standard Offence Classification*, Cat. no. 1234.0). These classifications do not necessarily correspond exactly with offences as defined in legislation. All offence classifications presented in this report are listed in Appendix 1, including a list of all NSW Police Force incident categories that make up these offence classifications.

5. MAPS

5.1 Locating criminal incidents

To produce crime maps, criminal incident data must be geocoded. Geocoding is the process of assigning a geographic reference (longitude and latitude coordinates) to a criminal incident. The coordinates are referred to as 'geocodes' in this report. Geocodes can be determined using street addresses, place names and other landmark information. Some criminal incidents do not have adequate locational information. Such incidents cannot therefore be represented spatially. Crime maps are only produced for a particular incident type when at least 75 per cent of incidents recorded within an LGA have geocodes.

Criminal incidents that have complete street address information are accurately geocoded to the location as recorded in COPS data. Inaccuracies in determining location may arise if the police failed to record the location of an incident correctly or completely. Geocoding is also subject to data quality issues inherent in the geocoding software and in the digital street, suburb, postcode and features datasets. All data points on the maps included in this report should therefore be treated as approximate locations only.

Incidents occurring in landmarks that cover a large area, for example parks and schools, are geocoded to the geographic centre of the landmark. Recorded criminal incidents that take place in correctional, detention or remand centres are not represented spatially in this crime report.

5.2 Spatial data and software

The digital LGA and land use boundaries used in this crime report were obtained from the ABS (*Australian Standard Geographical Classification* (ASGC), Digital Boundaries, 2006, ABS July 2006, Cat. No 1259.0.30.002). Information regarding this digital data is available from the ABS at:

<http://www.abs.gov.au/AUSSTATS/abs@.nsf/DetailsPage/1259.0.30.0022006?OpenDocument>

All other digital spatial data used in this crime report (street networks, postcodes, suburbs, water and park boundaries, and other points of interest) were obtained from MapInfo Corporation as part of the StreetPro© Australia 11.5 software package. Information regarding this digital data is available from MapInfo at:

<http://extranet.mapinfo.com/products/Overview.cfm?productid=138>

MapMarker V11.5, developed by MapInfo Corporation, was used to geocode the criminal incident data. ArcMap 9.2, developed by ESRI, was used to produce the crime maps.

5.3 Hotspot (kernel density) maps

This crime report uses kernel density maps to illustrate areas of high and low crime concentration within the LGA. The relative density of crime is reflected by the colour gradation: areas with no criminal incidents are white; areas with a small number of incidents are shaded lightly and the shading becomes progressively darker as the density of criminal incidents increases. The hotspot maps were created in ArcMap 9.2 with the Kernel Density tool and have a cell size of 25 metres and a search radius of 250 metres. The figure next to the label 'highest crime density' refers to the number of incidents geocoded within the 250 metres search radius of the 25 m² cell with the highest crime densities.

Note: crime density levels cannot be compared across the hotspot maps for the different offence categories because different scales have been used.

5.4 Privacy

When people report crimes to the police they expect that their details will be treated with confidentiality. All reasonable care has been taken in the production of this report to respect the privacy concerns of individuals, companies and other bodies who have been the victims of crime, while simultaneously providing information that will be useful for crime prevention planners. The hotspot maps provided in this crime report show the spatial distribution of crime, while minimising the likelihood of pinpointing the specific addresses at which incidents have occurred. This is to prevent the possibility of identifying the offender(s) or victim(s) involved in the incidents.

6. CRIME BY TIME, DAY AND MONTH

Each offence category for which maps have been produced also includes graphs showing (a) the proportion of incidents by the month in which the incident occurred and (b) the proportion of incidents by the time of day and day of week on which the incident occurred. While the reporting date is the usual counting rule employed in this report (see Note 2), the date on which the incident occurred is employed when estimating crime by time, day and month. This is because there is sometimes uncertainty about the time, day or month in which incidents actually occurred.

Take, for example, a family who go on holiday for two weeks over the Christmas period and who return to find their house has been broken into. Because the victims are unsure about the actual time at which the incident occurred a 'start date/time' and 'end date/time' will be recorded on the COPS database. In the example provided, the incident start and end times will be two weeks apart. In order to minimise the amount of uncertainty in our estimates of the temporal distribution of crime, only those incidents where the start date and end date were the same are included in the calculations.

7. PERSONS OF INTEREST

Table 4 shows the age and gender distribution of persons of interest (POIs) proceeded against by police for criminal incidents in the Woollahra LGA. Most POIs recorded by police are alleged offenders or persons who the police suspect have been involved in a criminal incident. Police do not proceed against all POIs identified in the COPS database. However only those POIs who were proceeded against are included in Table 4. Not all of these persons were proceeded against to court. Some may have been warned, cautioned or referred to a Youth Justice Conference under the *Young Offenders Act 1997*. Others may have been cautioned for using cannabis or other drugs and others may have been given infringement notices. Infringement notices are on the spot fines that can be paid for and finalised without going to court.

8. COUNTING VICTIMS AND PERSONS OF INTEREST

As a result of the way that victim and POI data are recorded on COPS, Tables 3 and 4 are not counts of unique persons. They actually count the interaction between person-level data and incident-level data. This is because criminal incidents involving multiple victims and/or offenders can have multiple victims and/or POIs attached. On the other hand, a single POI or victim could also be associated with more than one criminal incident. These tables, while useful for highlighting the age and gender characteristics of victims and offenders, overestimate of the number of unique victims and POIs identified by police.

POI information will not usually be recorded for criminal incidents in which there are no known suspects. This is very common among incidents of property crime that have low clear up rates. A cleared criminal incident is one which, in the view of police, has been satisfactorily cleared either by the commencement of legal proceedings against an alleged offender or otherwise. Incidents such as malicious damage to property and break and enter have low clear-up rates because the offender is unknown in most cases. POI data should be treated cautiously for these offence types because we only know about the characteristics of people identified by police. The characteristics of offenders not identified by police may vary in a systematic way from the characteristics of known offenders.

9. ALCOHOL RELATED INCIDENTS

Table 5 shows the proportion of selected offences that were flagged by police as alcohol related. Incidents are only flagged as alcohol related when information is available to police which leads them to believe that alcohol was a factor associated with the incident. It is particularly important to be cautious when interpreting the relationship between alcohol and crime for criminal incidents that have low clear-up rates. When police do not know who the offender(s) are, they cannot usually make a judgement about the sobriety of the offender(s). For offences such as these it is likely that the number of incidents flagged by police as alcohol related is considerably lower than the true number.

LOCAL AREA CRIME SUMMARY

10. OVERVIEW OF RECENT TRENDS

Table 1. Number of incidents recorded in the Woollahra LGA, 24- and 60-month trend change and NSW ranking (2006) for the 17 major offence types

| Offence type | Jan-Dec 2002 | Jan-Dec 2003 | Jan-Dec 2004 | Jan-Dec 2005 | Jan-Dec 2006 | 24-month trend^^ | % Change over 24 months | 60-month trend^^ | % Change per year | 2006 LGA Rank* |
|--------------------------------------------------------------|--------------|--------------|--------------|--------------|--------------|------------------|-------------------------|------------------|-------------------|----------------|
| Murder^ | 0 | 0 | 2 | 1 | 2 | nc** | *** | nc** | *** | nc** |
| Assault - domestic violence related | 86 | 59 | 70 | 67 | 68 | Stable | *** | Stable | *** | 135 |
| Assault - non-domestic violence related | 277 | 239 | 214 | 215 | 186 | Stable | *** | Down | 9.5% | 122 |
| Sexual assault | 16 | 13 | 17 | 16 | 8 | nc** | *** | nc** | *** | 134 |
| Indecent assault, act of indecency and other sexual offences | 17 | 19 | 32 | 32 | 25 | Stable | *** | nc** | *** | |
| Robbery without a weapon | 48 | 53 | 48 | 33 | 35 | Stable | *** | Stable | *** | 19 |
| Robbery with a firearm | 5 | 11 | 9 | 2 | 6 | nc** | *** | nc** | *** | |
| Robbery with a weapon not a firearm | 36 | 26 | 31 | 20 | 29 | Stable | *** | Stable | *** | |
| Break and enter - dwelling | 1,095 | 876 | 564 | 484 | 408 | Down | 15.7% | Down | 21.9% | 43 |
| Break and enter - non-dwelling | 291 | 196 | 172 | 154 | 151 | Stable | *** | Down | 15.1% | 105 |
| Motor vehicle theft | 580 | 351 | 383 | 250 | 272 | Stable | *** | Down | 17.2% | 25 |
| Steal from motor vehicle | 1,066 | 839 | 871 | 525 | 647 | Up | 23.2% | Down | 11.7% | 7 |
| Steal from retail store | 143 | 132 | 132 | 111 | 97 | Stable | *** | Down | 9.2% | 60 |
| Steal from dwelling | 404 | 340 | 246 | 198 | 208 | Stable | *** | Down | 15.3% | 74 |
| Steal from person | 249 | 280 | 176 | 125 | 139 | Stable | *** | Down | 13.6% | 8 |
| Fraud | 316 | 287 | 268 | 304 | 275 | Stable | *** | Stable | *** | 29 |
| Malicious damage to property | 792 | 515 | 557 | 688 | 705 | Stable | *** | Stable | *** | 96 |

^ For murder, the data are counts of recorded victims, not criminal incidents (see Note 2, page 7).

^^ The trend test used was a two-tailed Kendall's rank-order correlation test with a 0.05 level of significance (see, for example, Conover, W.J. 1980, Practical Non-Parametric Statistics, 2nd ed, John Wiley and Sons, pp 256-260).

* Ranks are only calculated for LGAs with populations greater than 3000 people (n=143). Ranks are not calculated for murder due to the low number of recorded victims per LGA.

The robbery and sex offence categories are combined because the numbers are too small within the individual categories to calculate reliable rate estimates (see Note 4, page 8).

** Trend information is not calculated (nc) if at least one 12-month period in the selected timeframe had less than 20 incidents.

*** No annual percentage change is given if the trend is stable or if a trend has not been calculated.

11. CRIME MAPS AND GRAPHS FOR SELECTED OFFENCES

11.1 Assault – domestic violence related

- Proportion of incidents by month
- Proportion of incidents by time of day, day of week
- Hotspot map

Figure 1. Proportion of domestic violence related assault incidents by month

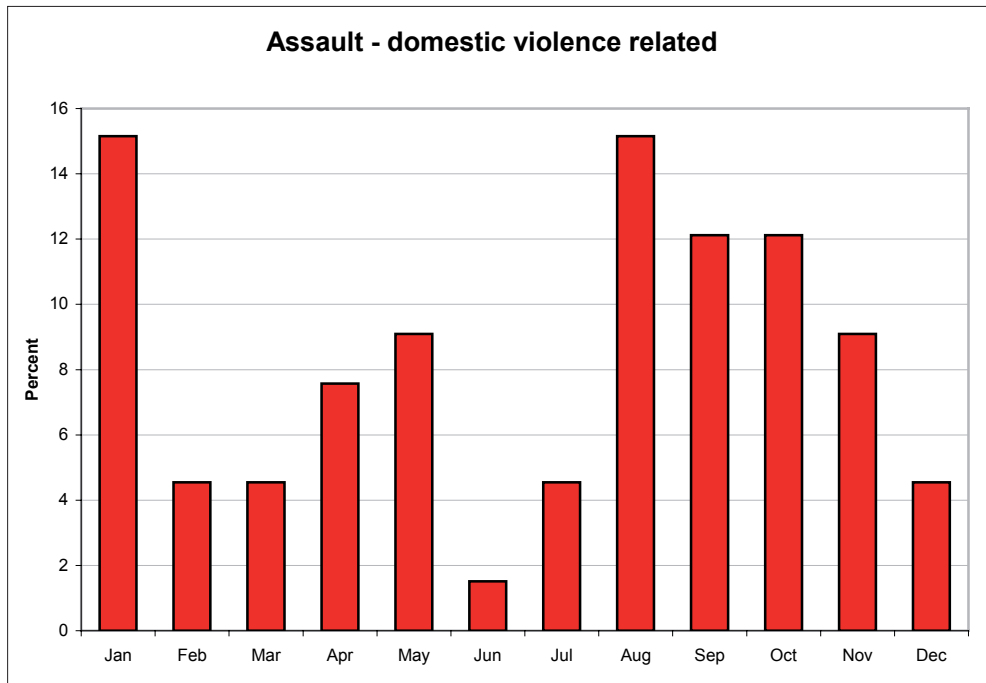


Figure 2. Proportion of domestic violence related assault incidents by time of day and day of week

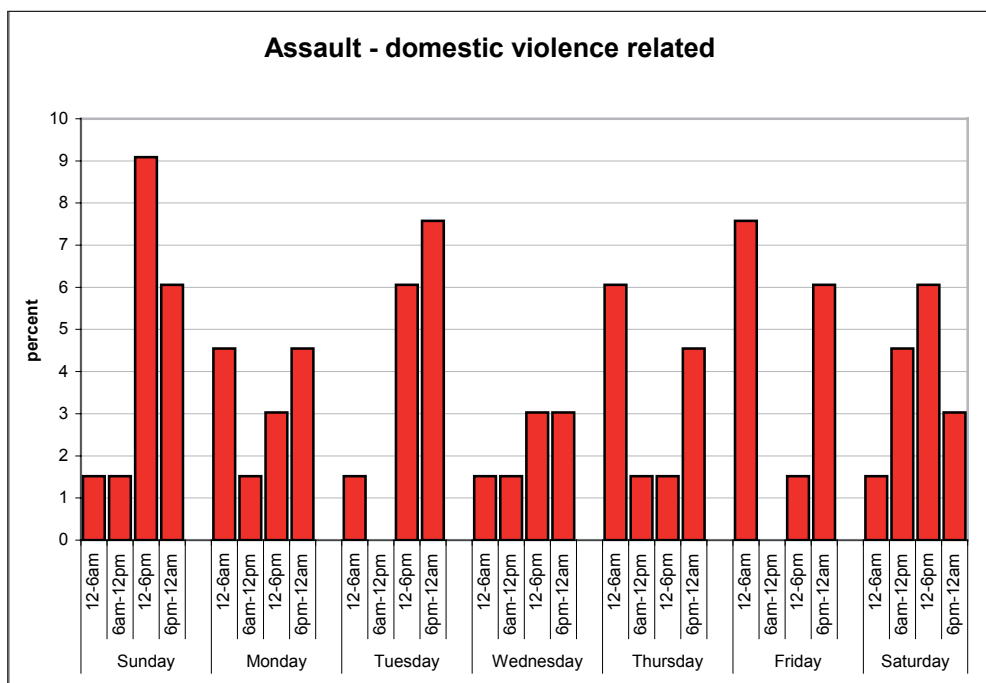
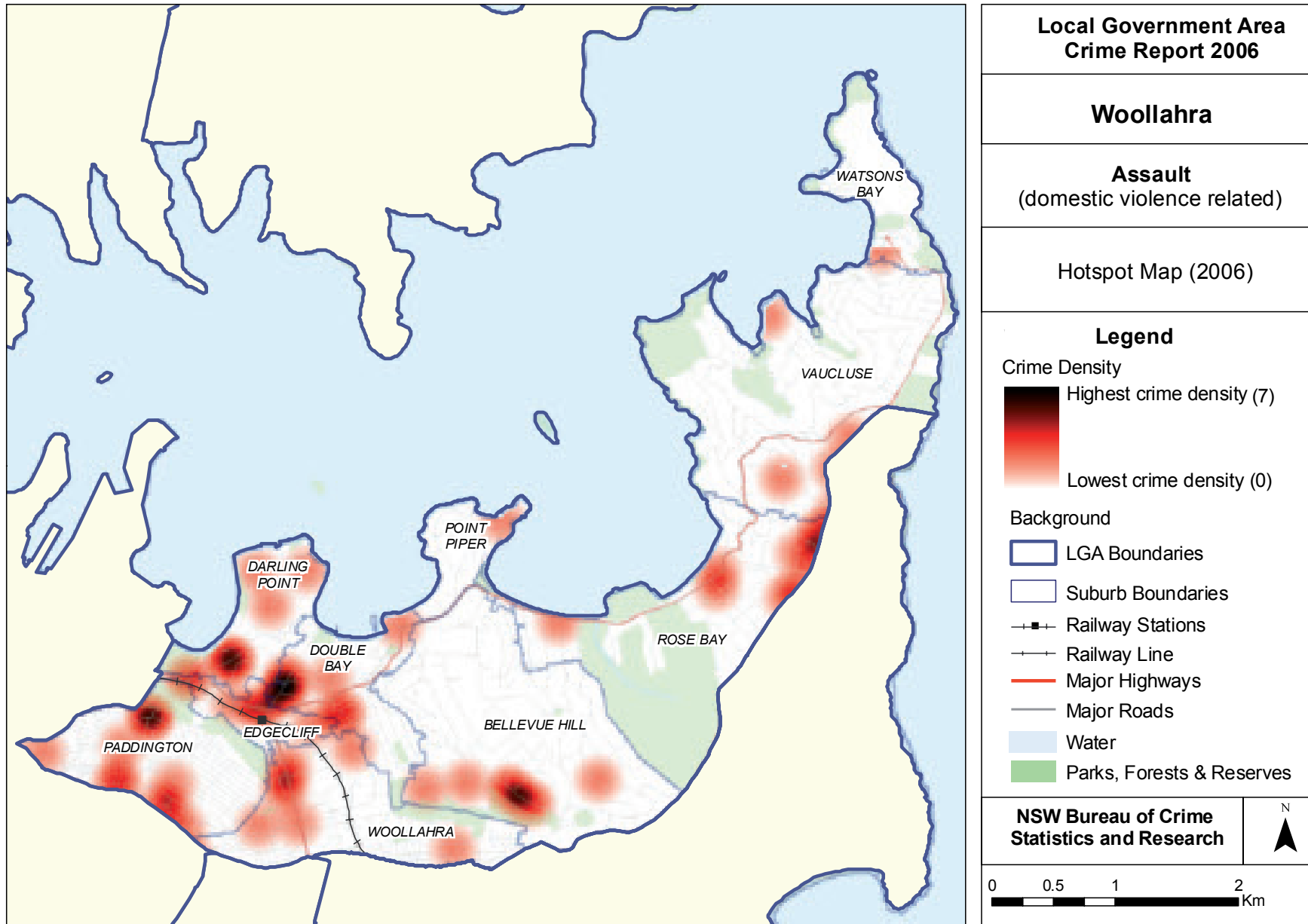


Figure 3. Hotspot map for domestic violence related assault incidents



11.2 Assault – non-domestic violence related

- Proportion of incidents by month
- Proportion of incidents by time of day, day of week
- Hotspot map

Figure 4. Proportion of non-domestic violence related assault incidents by month

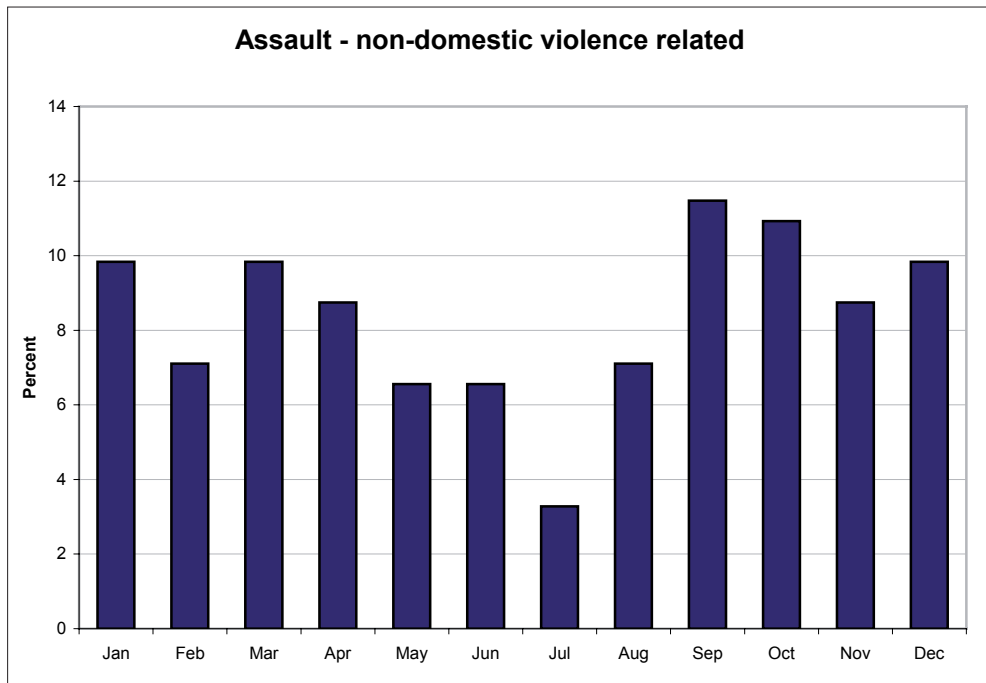


Figure 5. Proportion of non-domestic violence related assault incidents by time of day and day of week

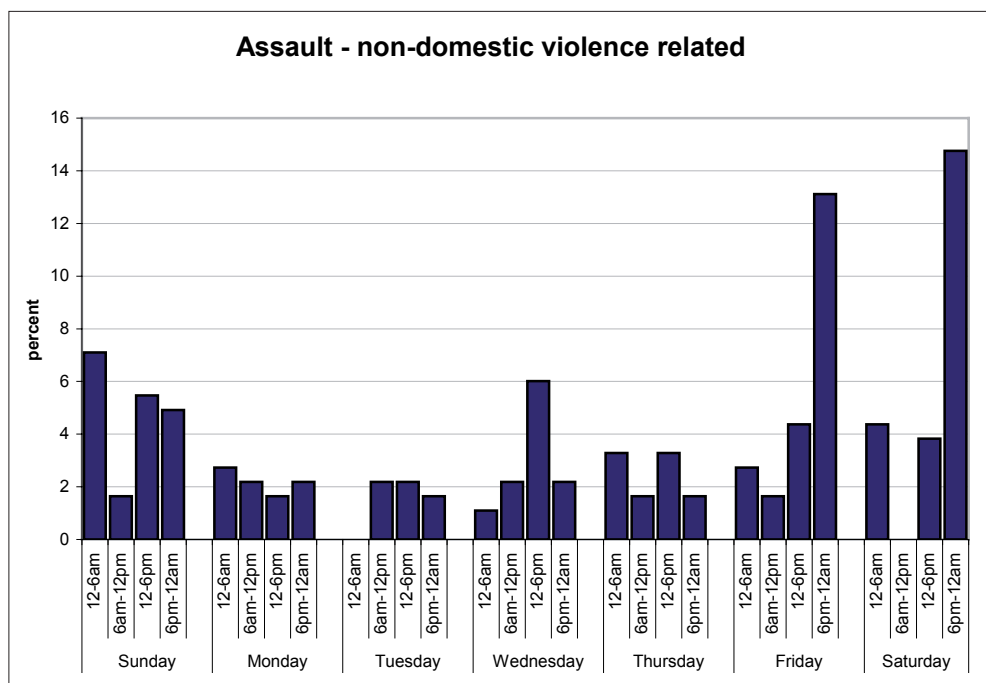
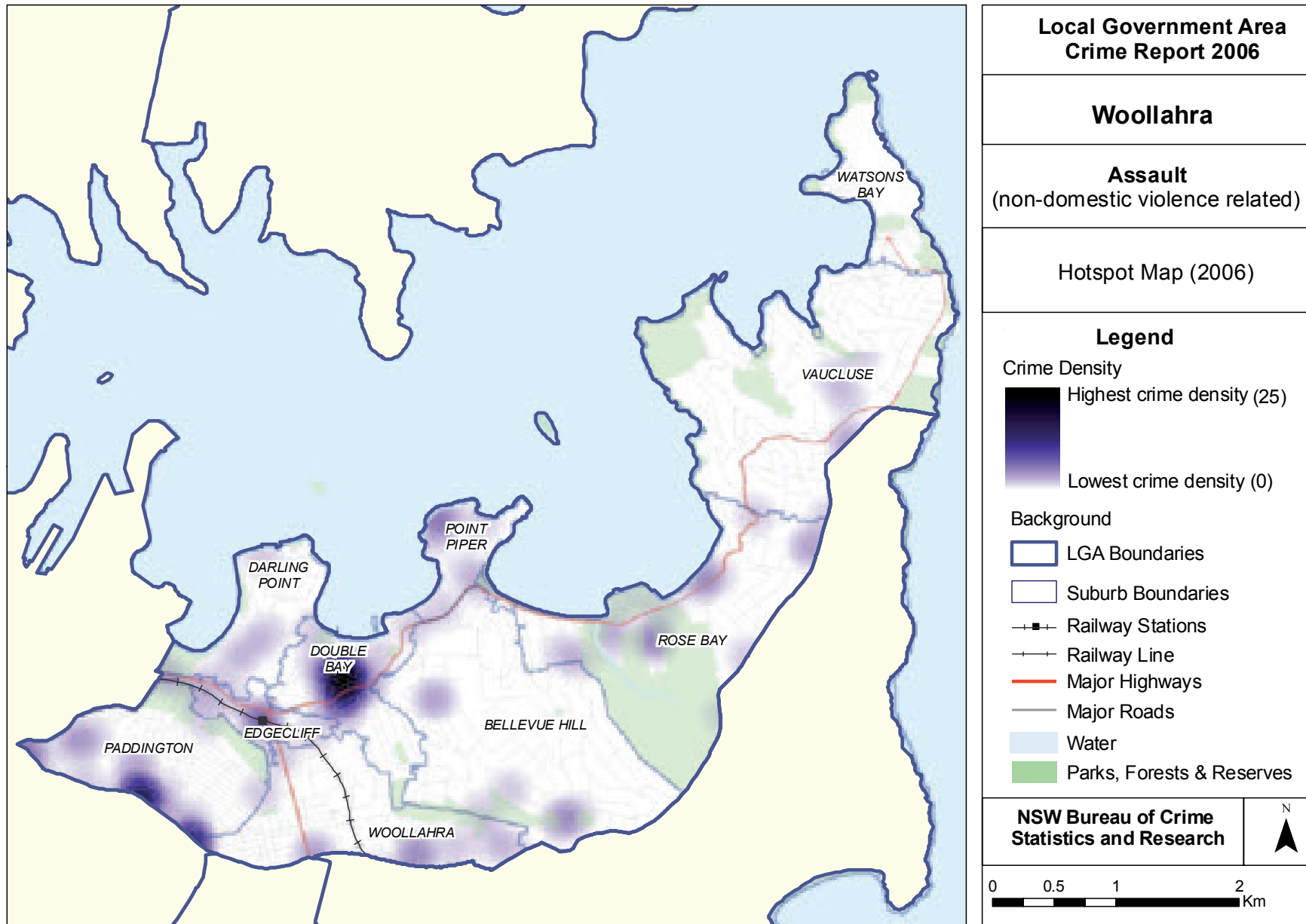


Figure 6. Hotspot map for non-domestic violence related assault incidents



11.3 Assault – non-domestic alcohol related

- Proportion of incidents by month
- Proportion of incidents by time of day, day of week
- Hotspot map

Figure 7. Proportion of non-domestic alcohol related assault incidents by month



Figure 8. Proportion of non-domestic alcohol related assault incidents by time of day and day of week

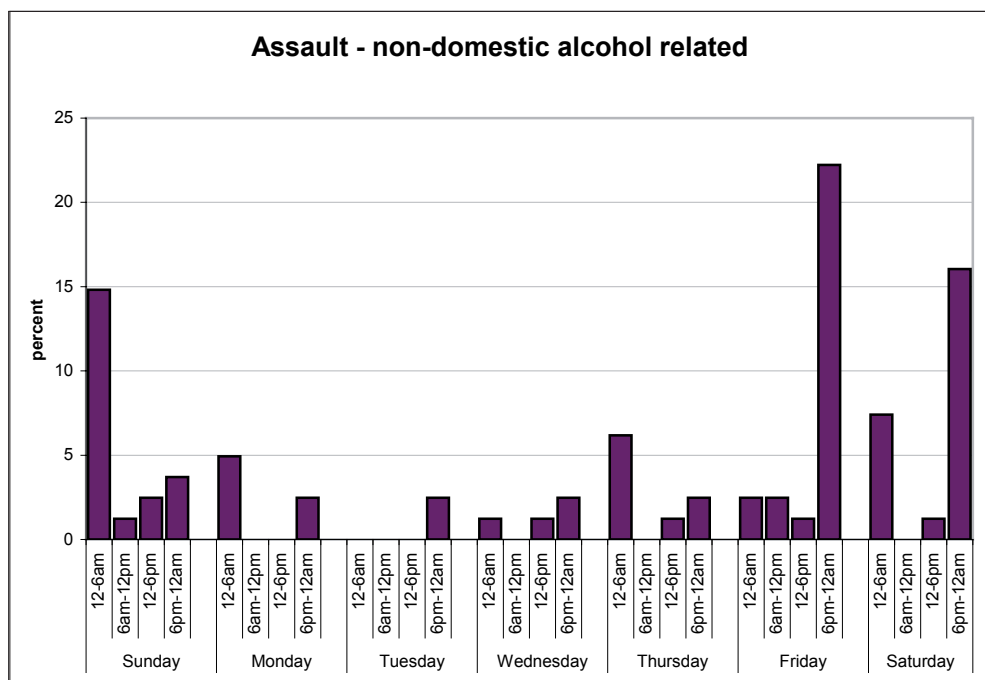
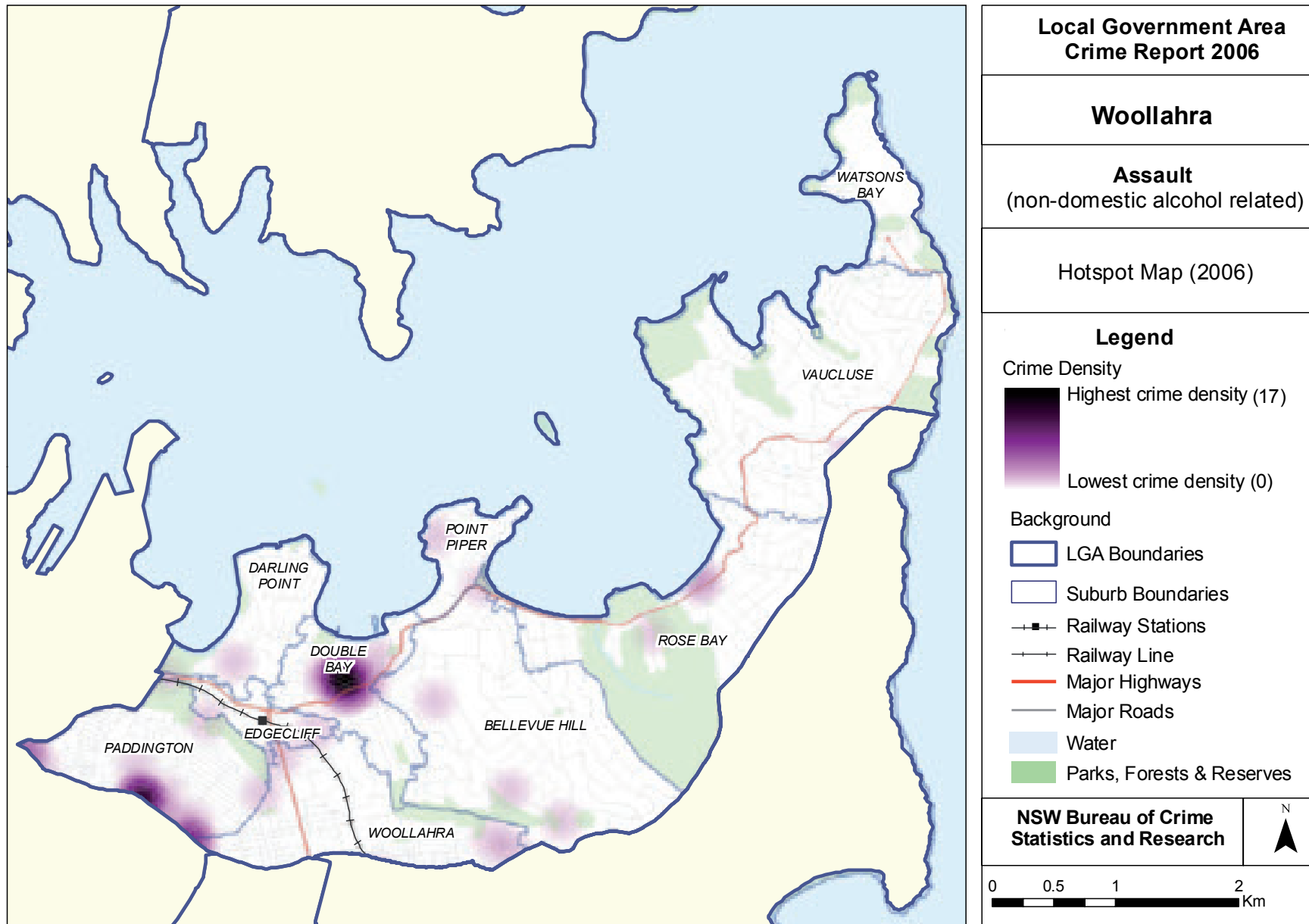


Figure 9. Hotspot map for non-domestic alcohol related assault incidents



11.4 Robbery

- Proportion of incidents by month
- Proportion of incidents by time of day, day of week
- Hotspot map

Figure 10. Proportion of robbery incidents by month

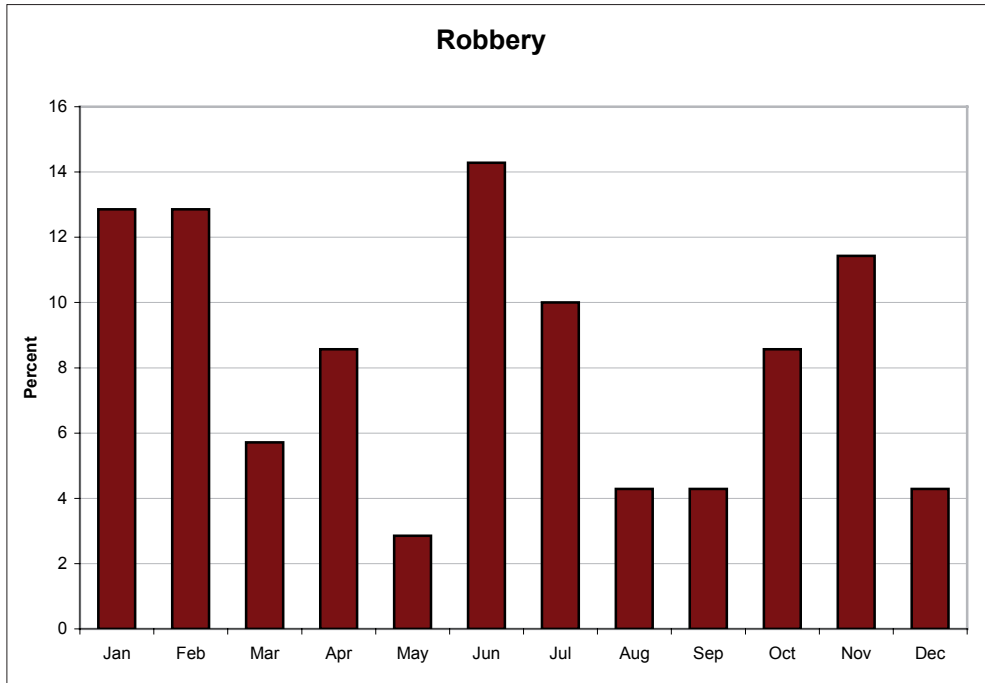


Figure 11. Proportion of robbery incidents by time of day and day of week

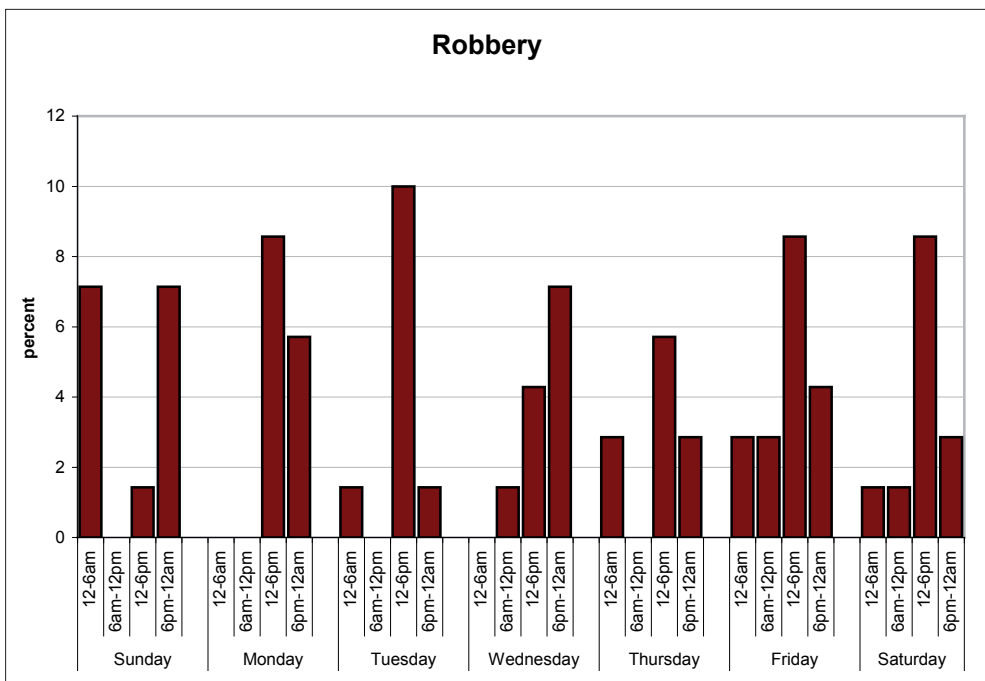
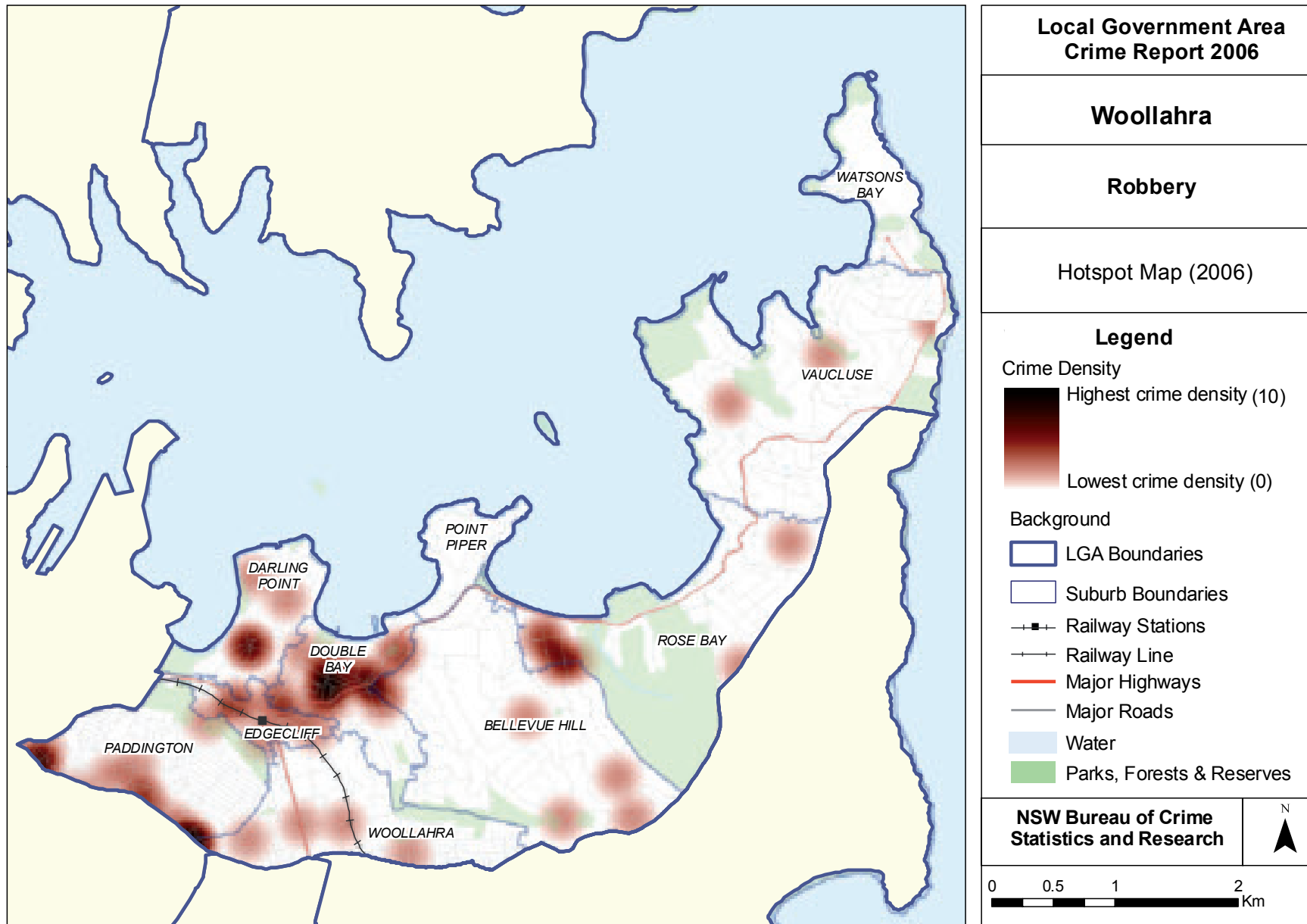


Figure 12. Hotspot map for robbery incidents



11.5 Break and enter – dwelling

- Proportion of incidents by month
- Proportion of incidents by time of day, day of week
- Hotspot map

Figure 13. Proportion of break and enter (dwelling) incidents by month

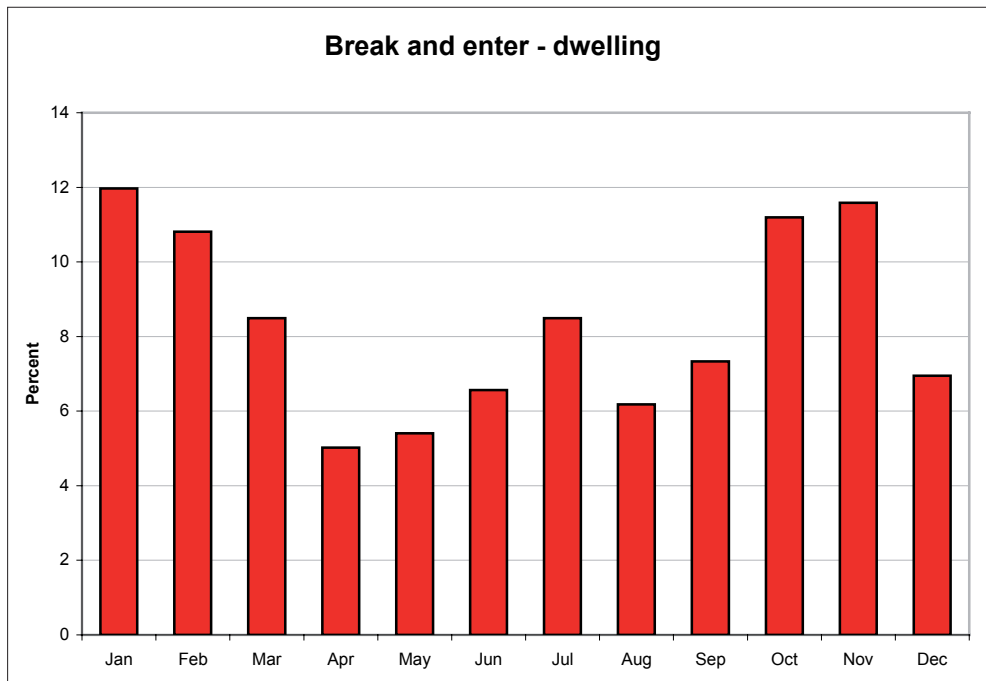


Figure 14. Proportion of break and enter (dwelling) incidents by time of day and day of week

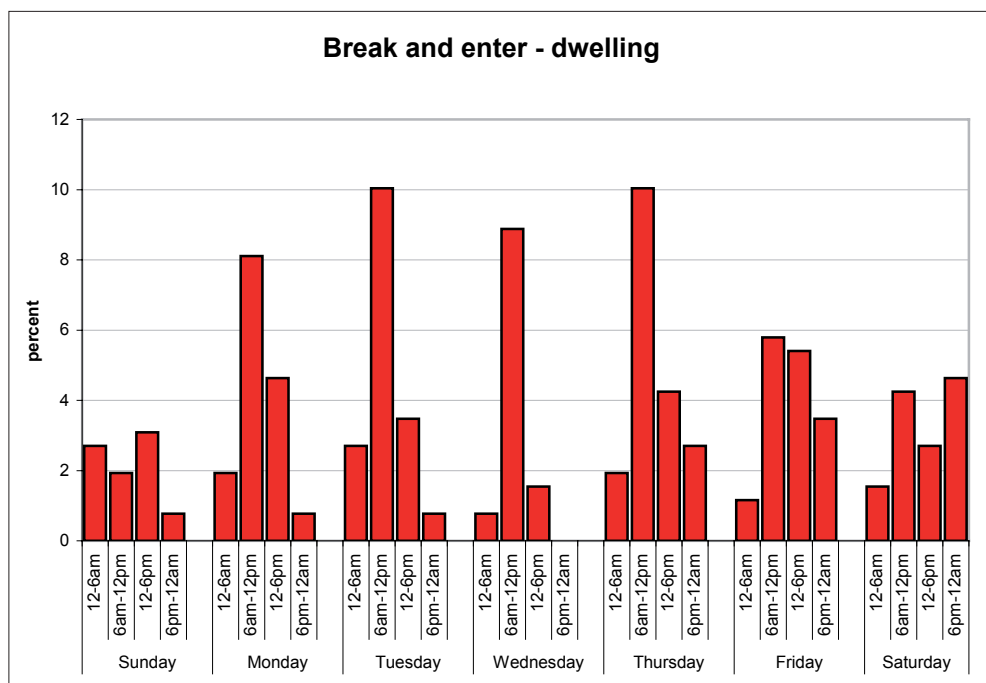
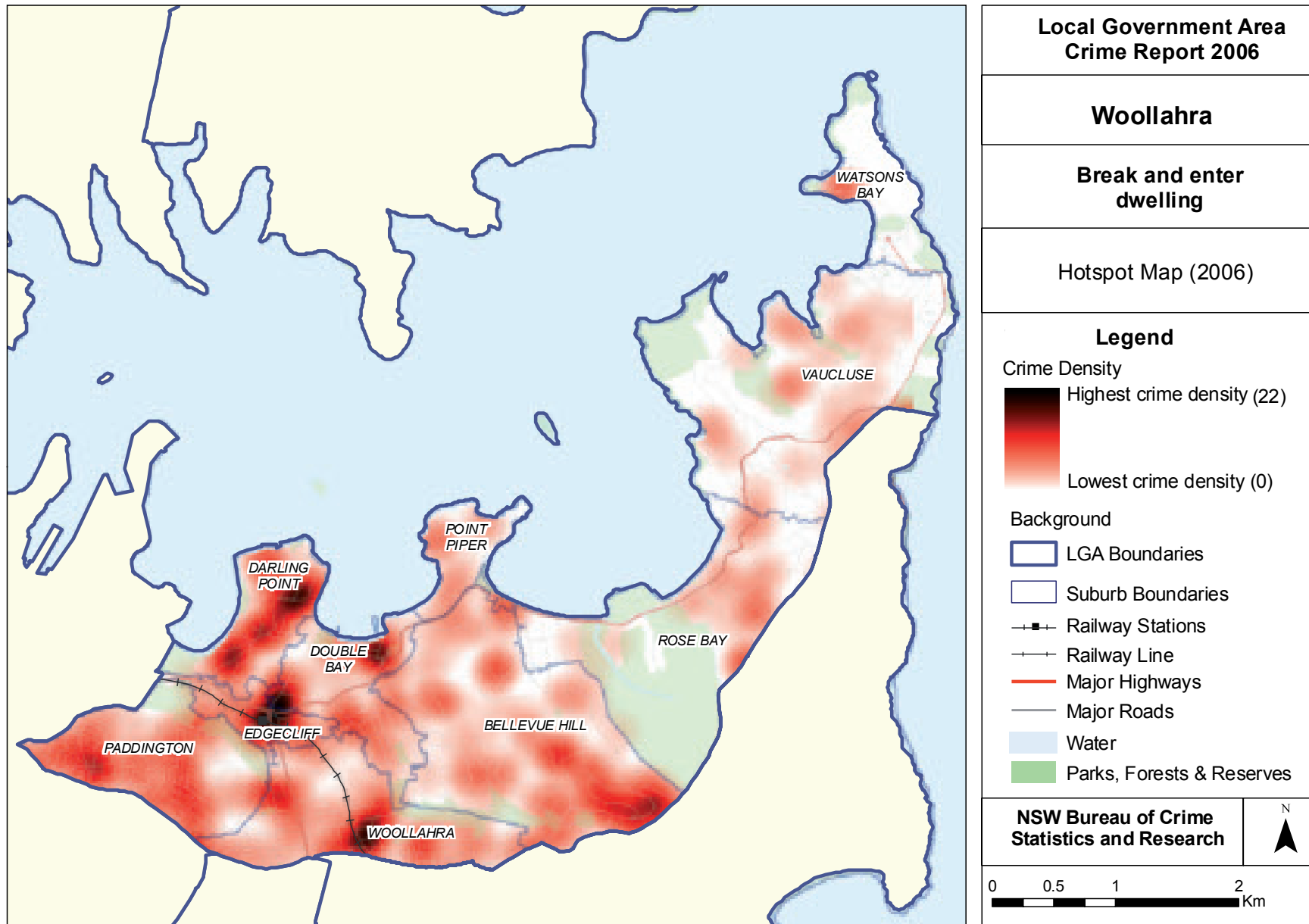


Figure 15. Hotspot map for break and enter (dwelling) incidents



11.6 Break and enter – non-dwelling

- Proportion of incidents by month
- Proportion of incidents by time of day, day of week
- Hotspot map

Figure 16. Proportion of break and enter (non-dwelling) incidents by month

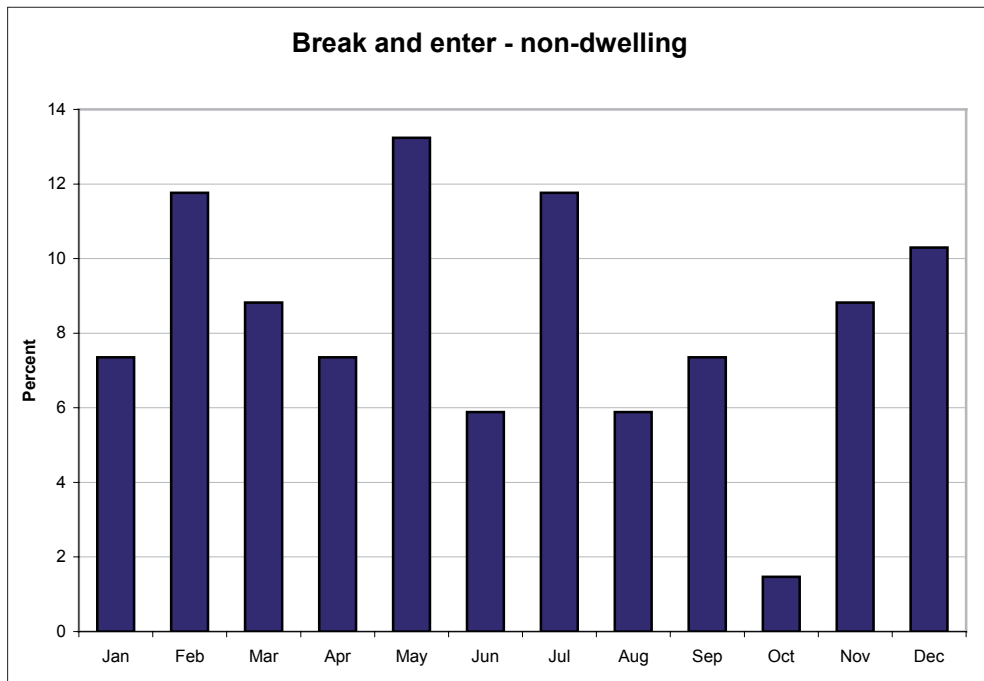


Figure 17. Proportion of break and enter (non-dwelling) incidents by time of day and day of week

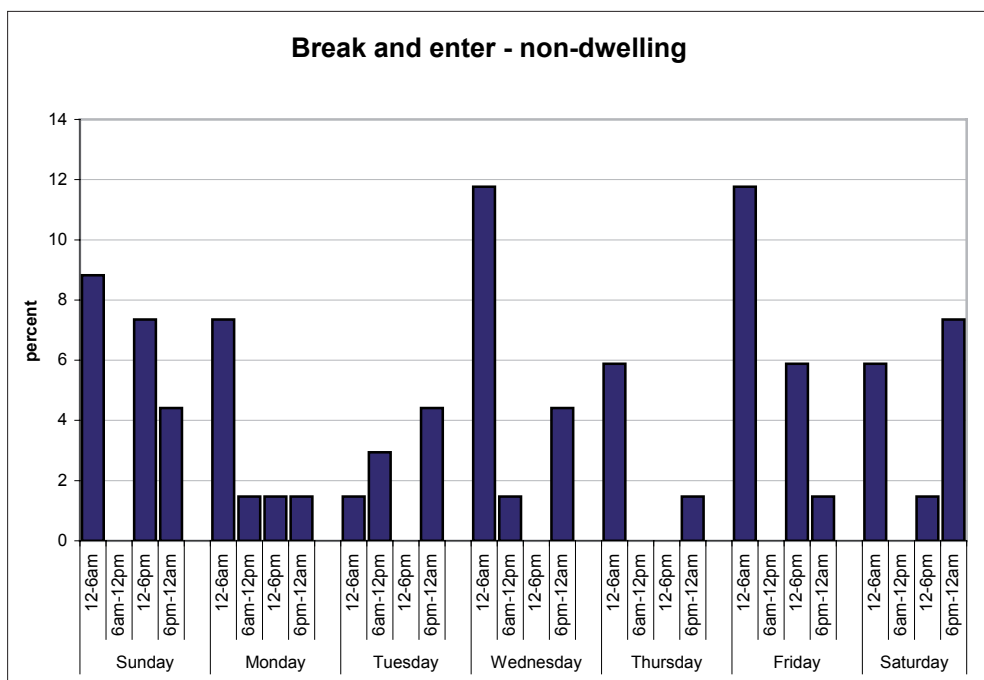
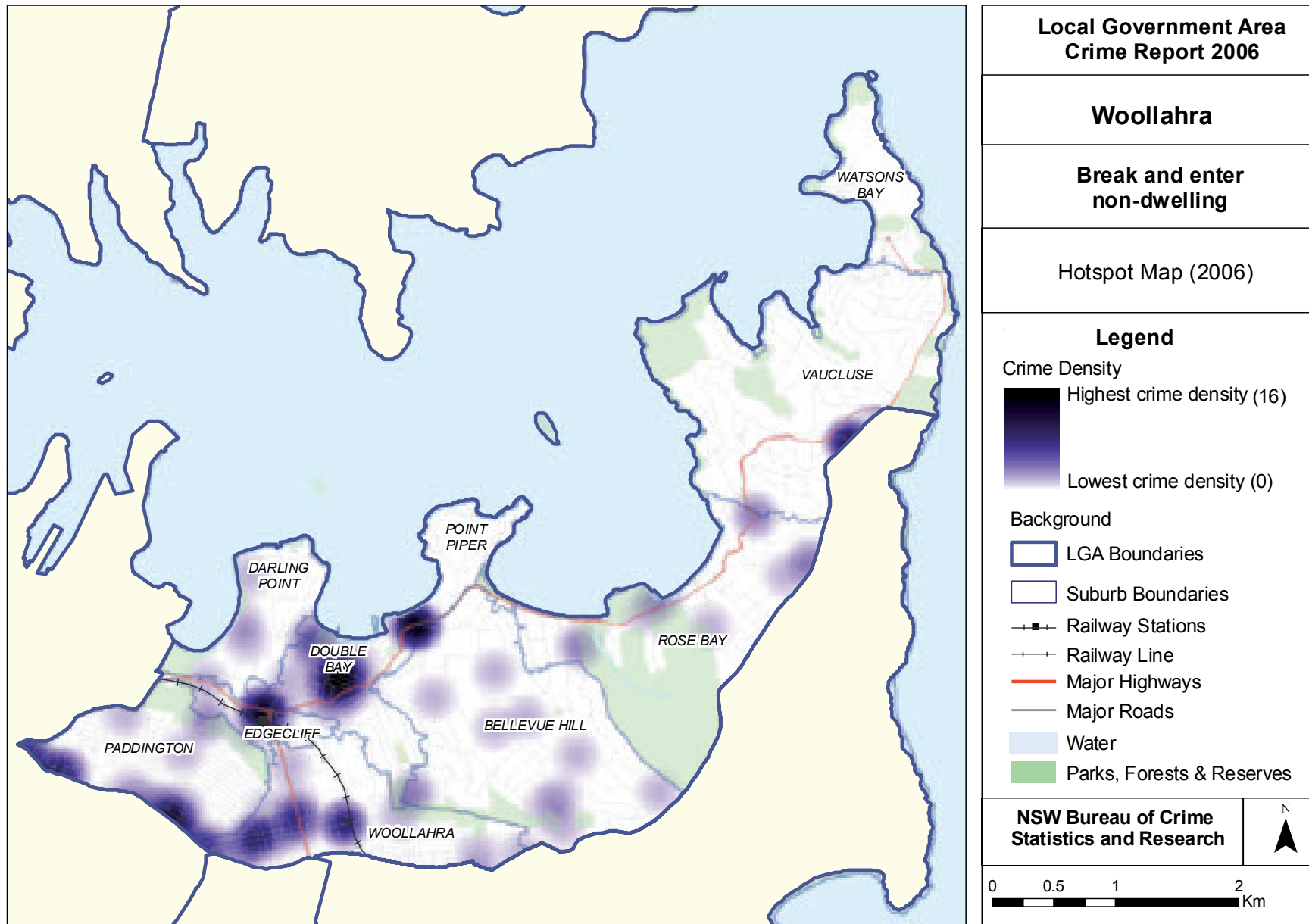


Figure 18. Hotspot map for break and enter (non-dwelling)



11.7 Motor vehicle theft

- Proportion of incidents by month
- Proportion of incidents by time of day, day of week
- Hotspot map

Figure 19. Proportion of motor vehicle theft incidents by month

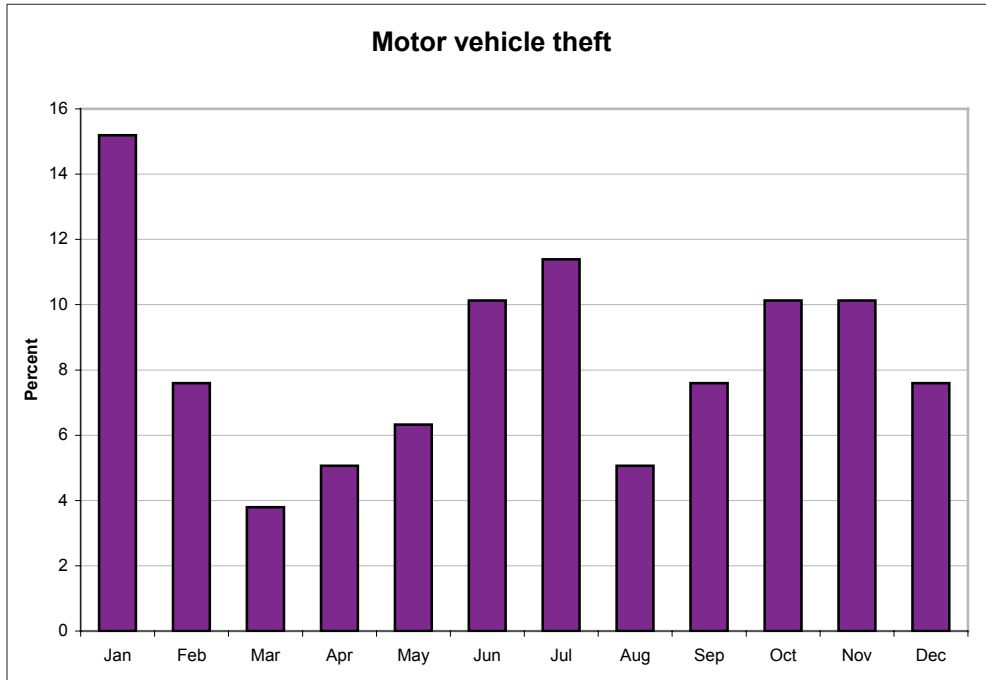


Figure 20. Proportion of motor vehicle theft incidents by time of day and day of week

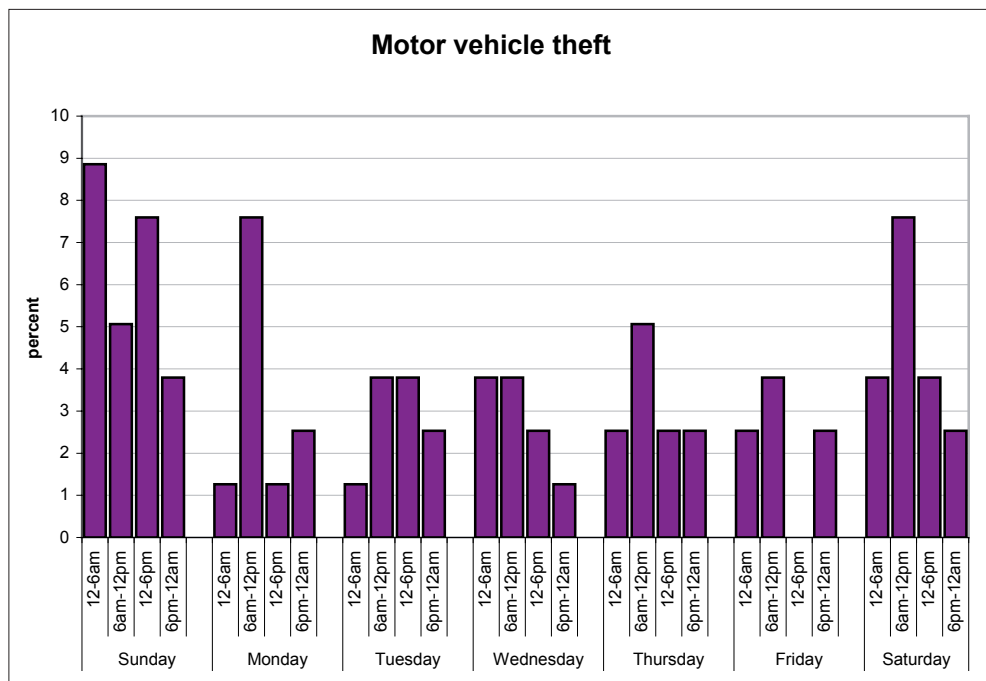
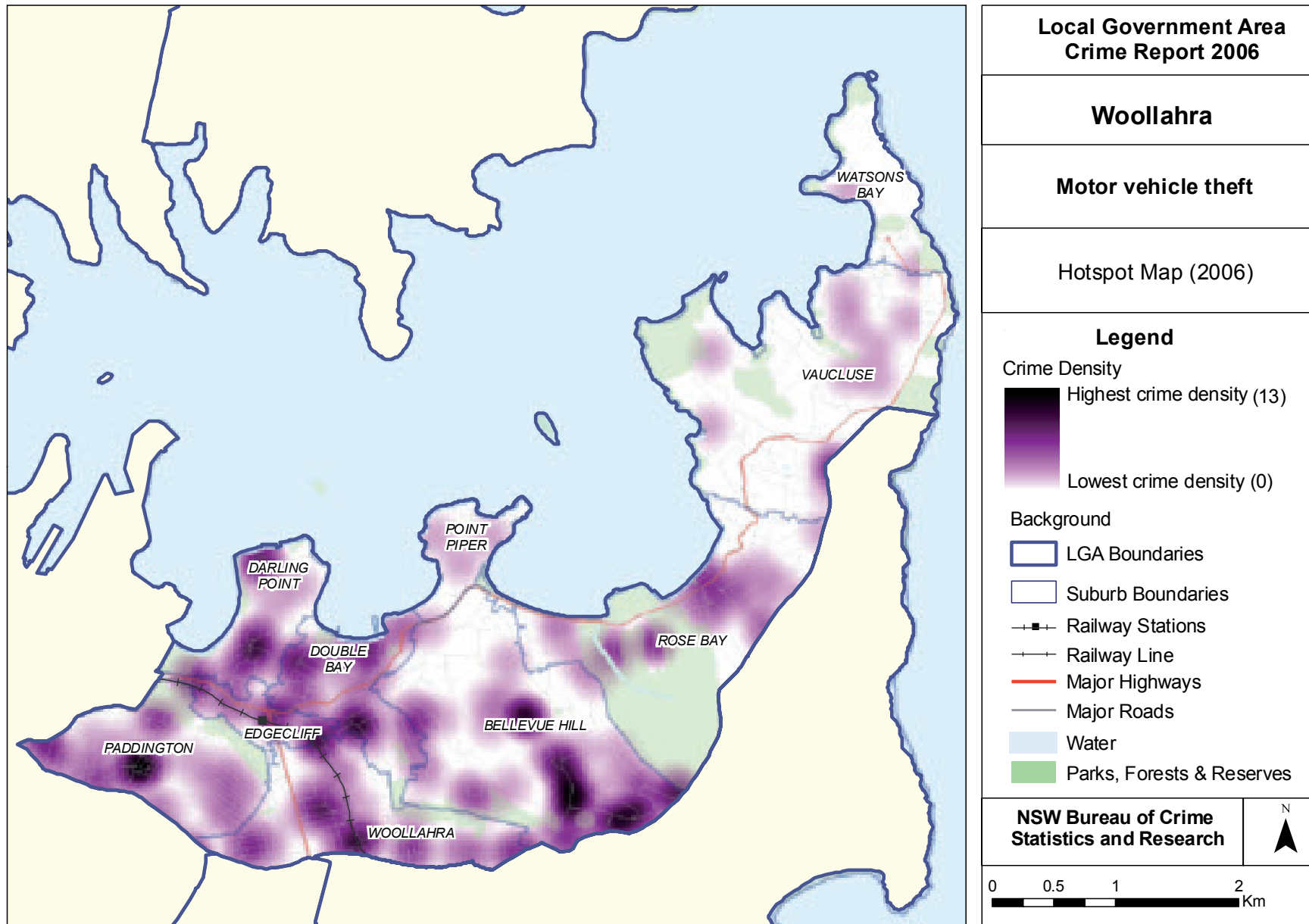


Figure 21. Hotspot map for motor vehicle theft incidents



11.8 Steal from motor vehicle

- Proportion of incidents by month
- Proportion of incidents by time of day, day of week
- Hotspot map

Figure 22. Proportion of steal from motor vehicle incidents by month

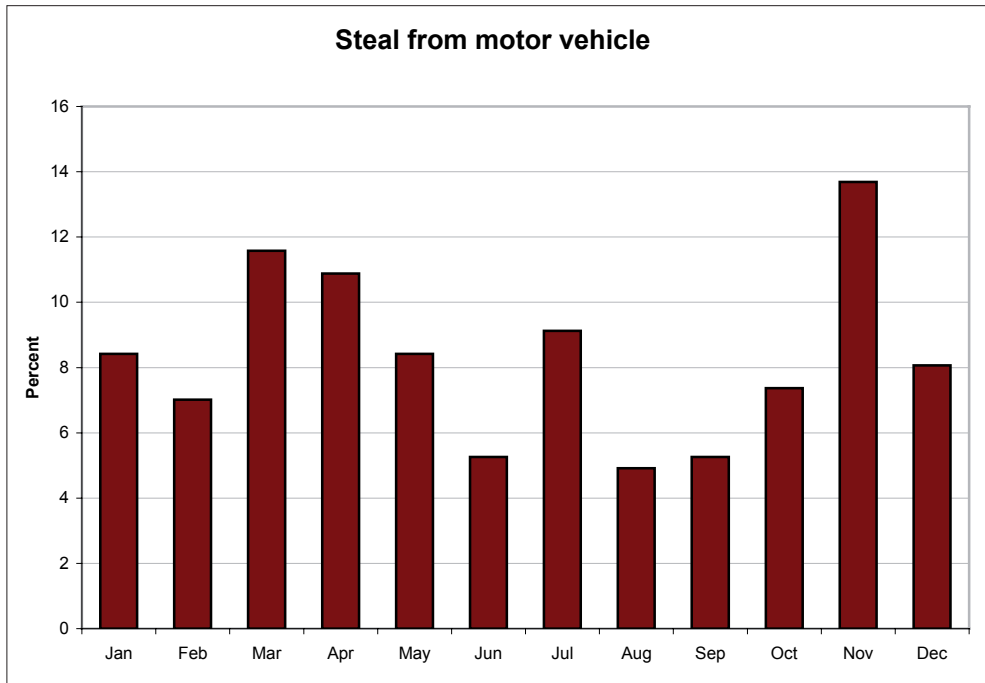


Figure 23. Proportion of steal from motor vehicle incidents by time of day and day of week

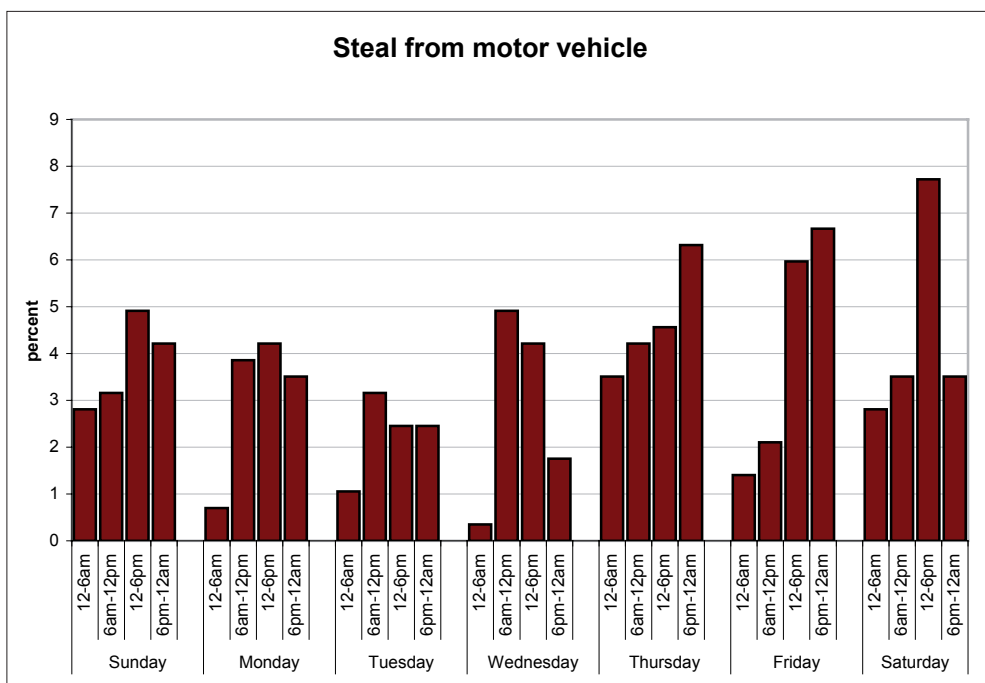
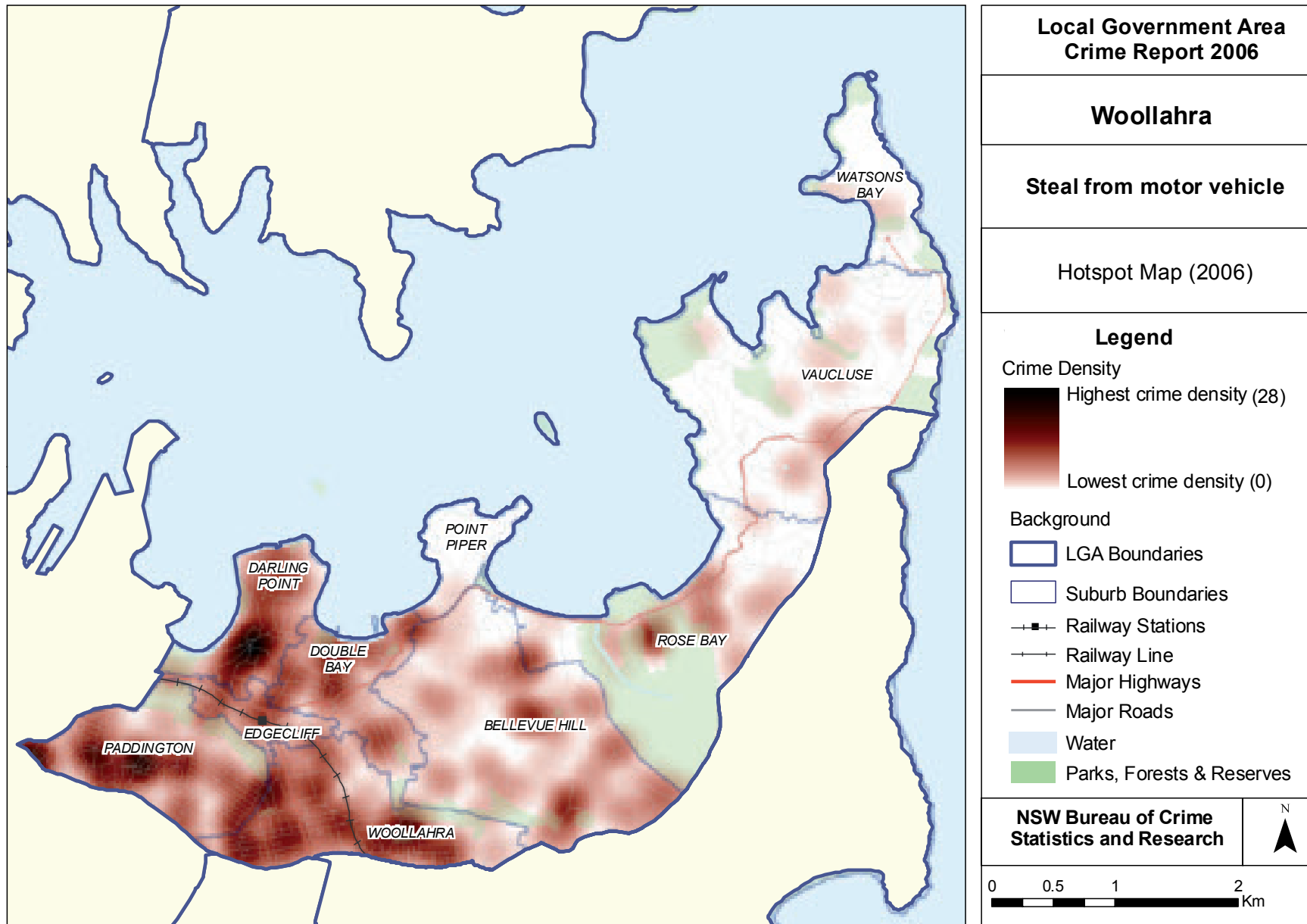


Figure 24. Hotspot map for steal from motor vehicle incidents



11.9 Steal from person

- Proportion of incidents by month
- Proportion of incidents by time of day, day of week
- Hotspot map

Figure 25. Proportion of steal from person incidents by month

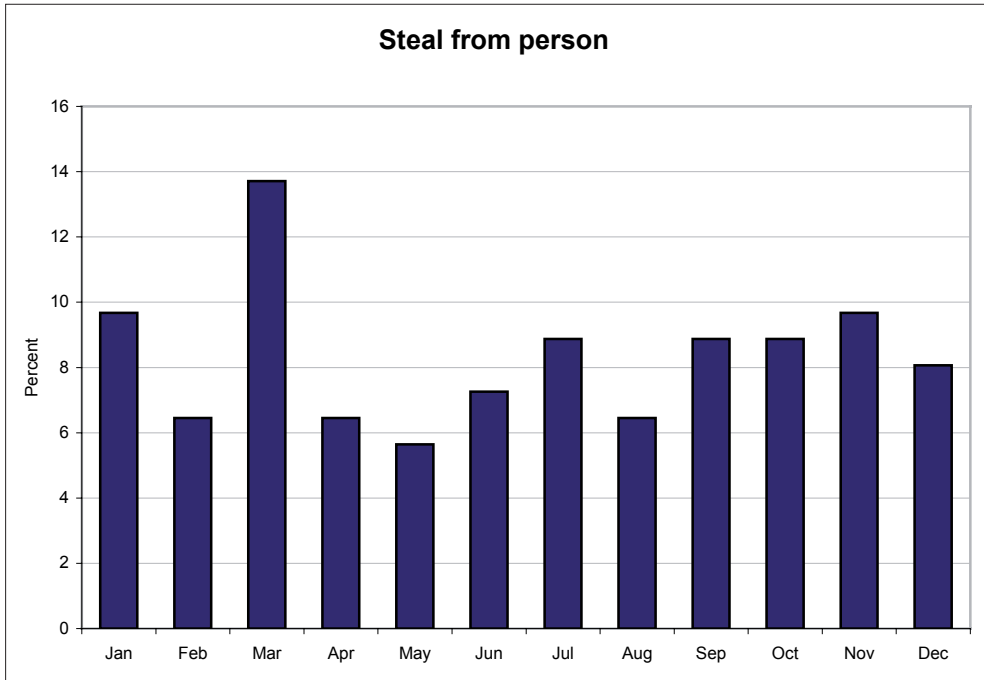


Figure 26. Proportion of steal from person incidents by time of day and day of week

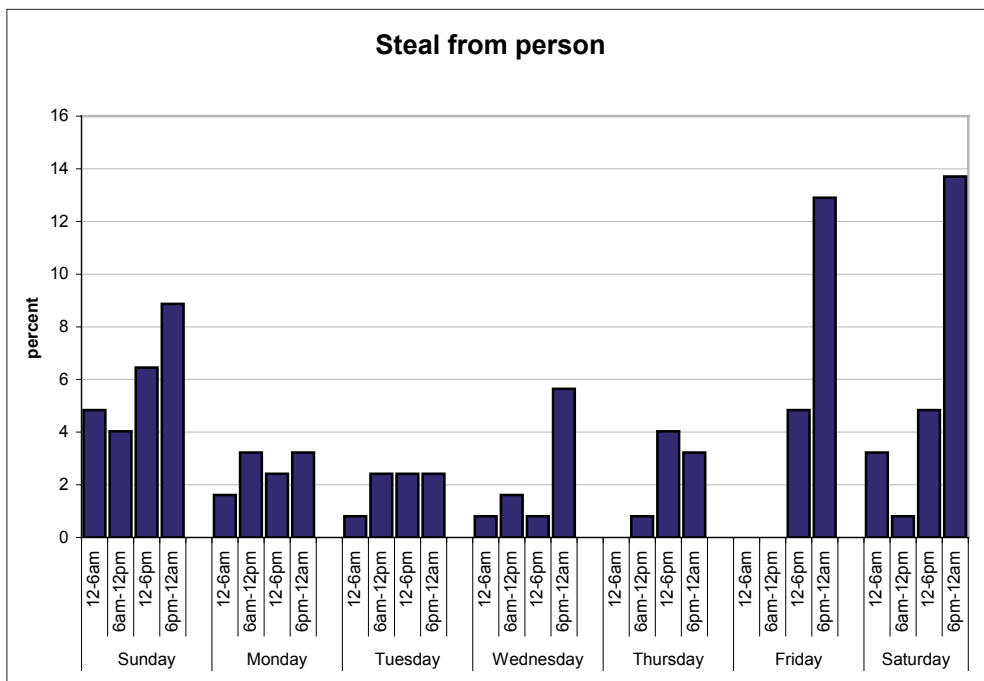
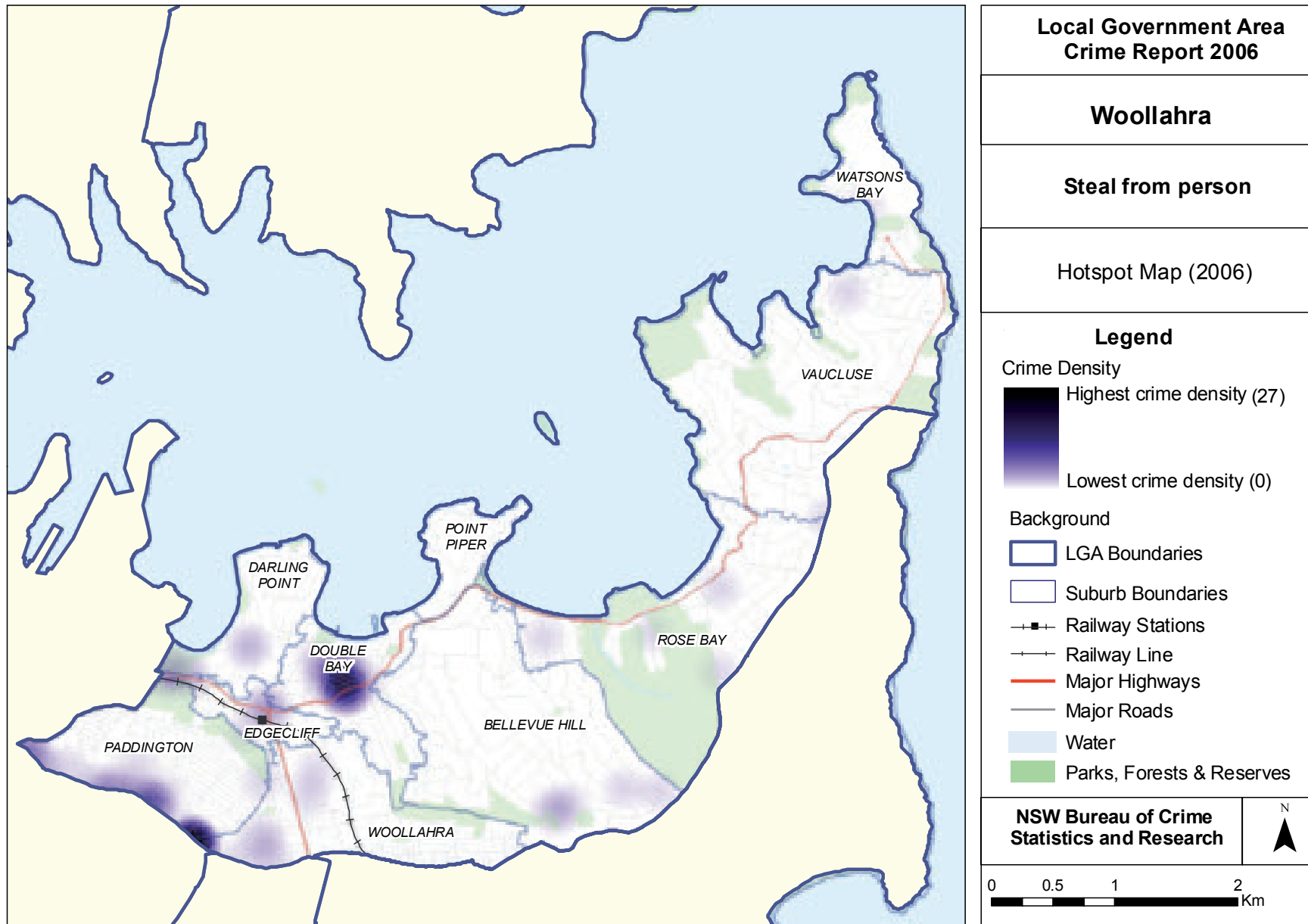


Figure 27. Hotspot map for steal from person incidents



11.10 Steal from dwelling

- Proportion of incidents by month
- Proportion of incidents by time of day, day of week
- Hotspot map

Figure 28. Proportion of steal from dwelling incidents by month

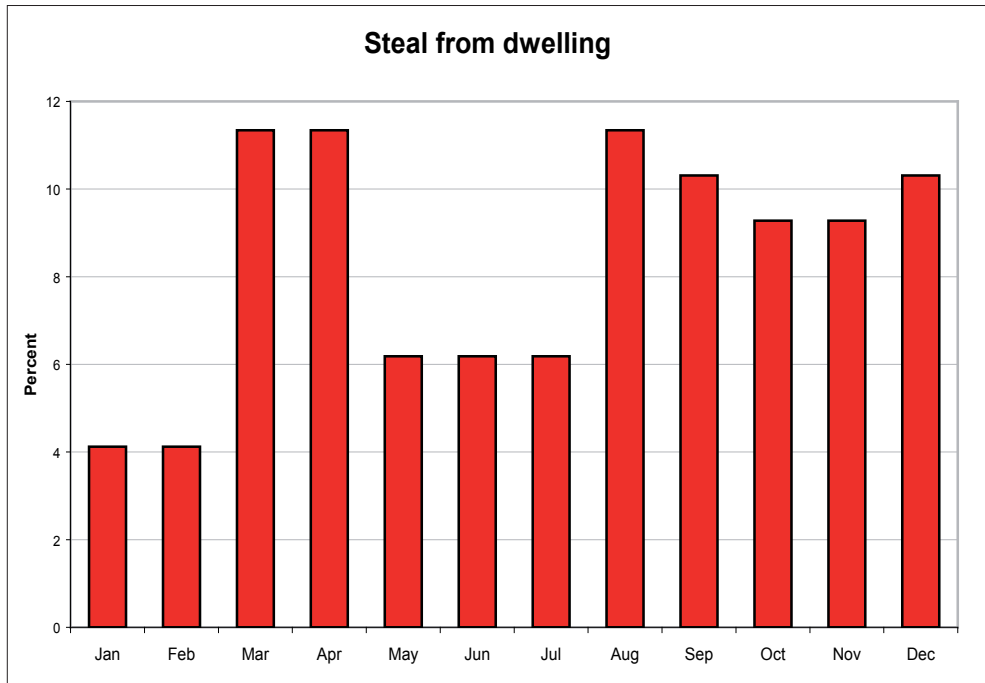


Figure 29. Proportion of steal from dwelling incidents by time of day and day of week

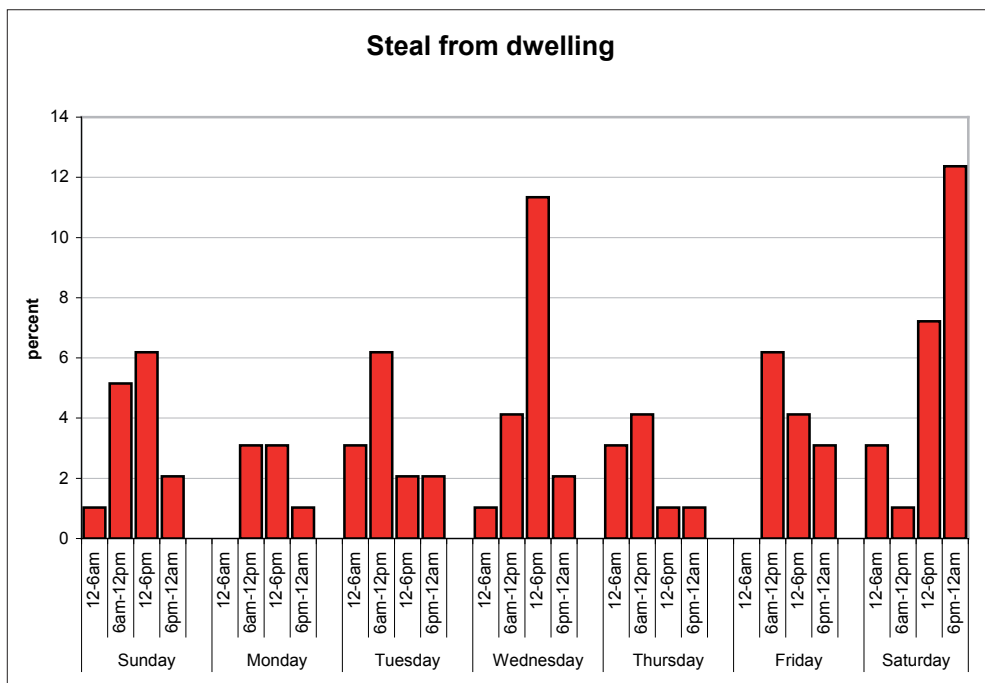
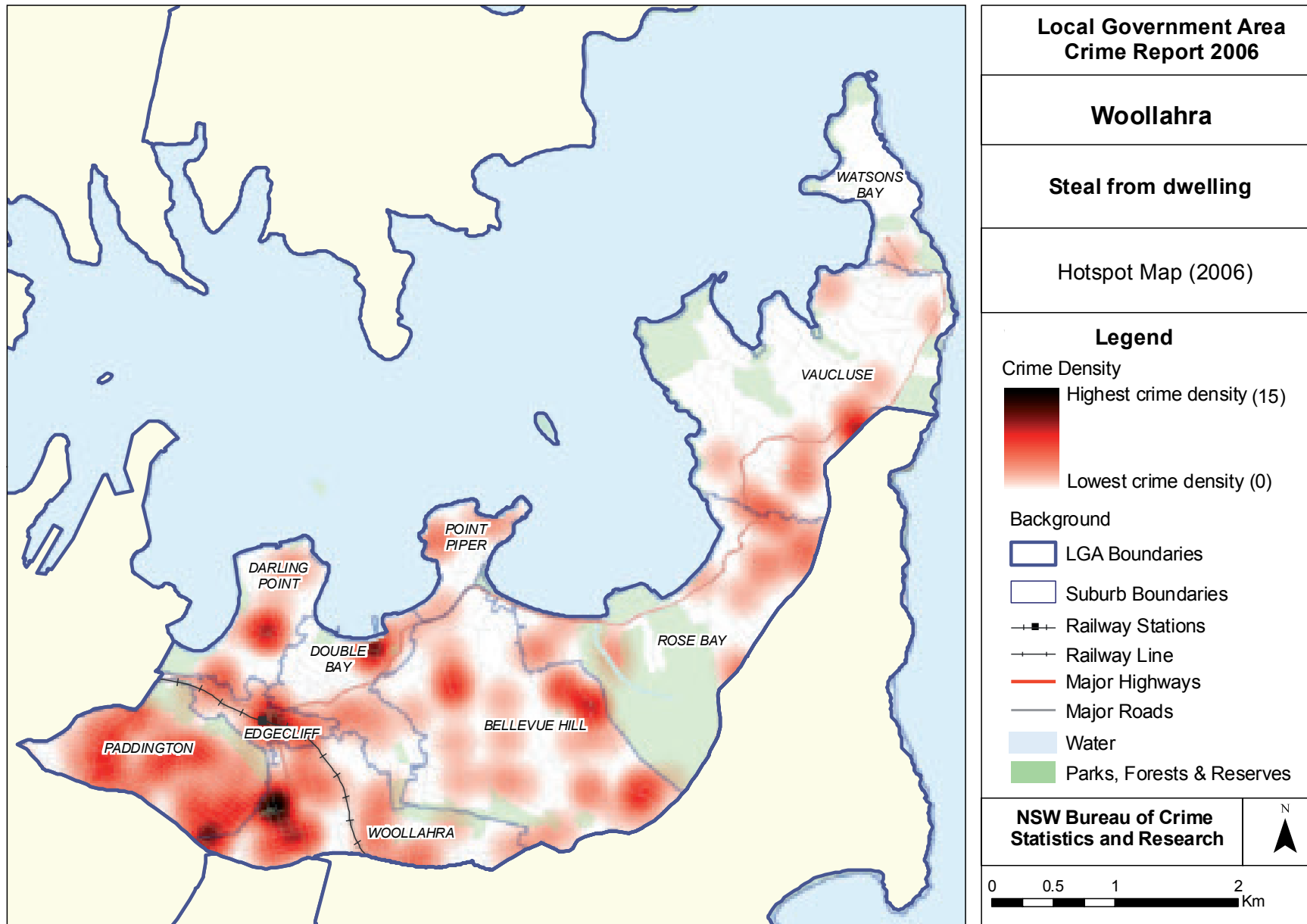


Figure 30. Hotspot map for steal from dwelling incidents



11.11 Malicious damage to property

- Proportion of incidents by month
- Proportion of incidents by time of day, day of week
- Hotspot map

Figure 31. Proportion of malicious damage to property incidents by month

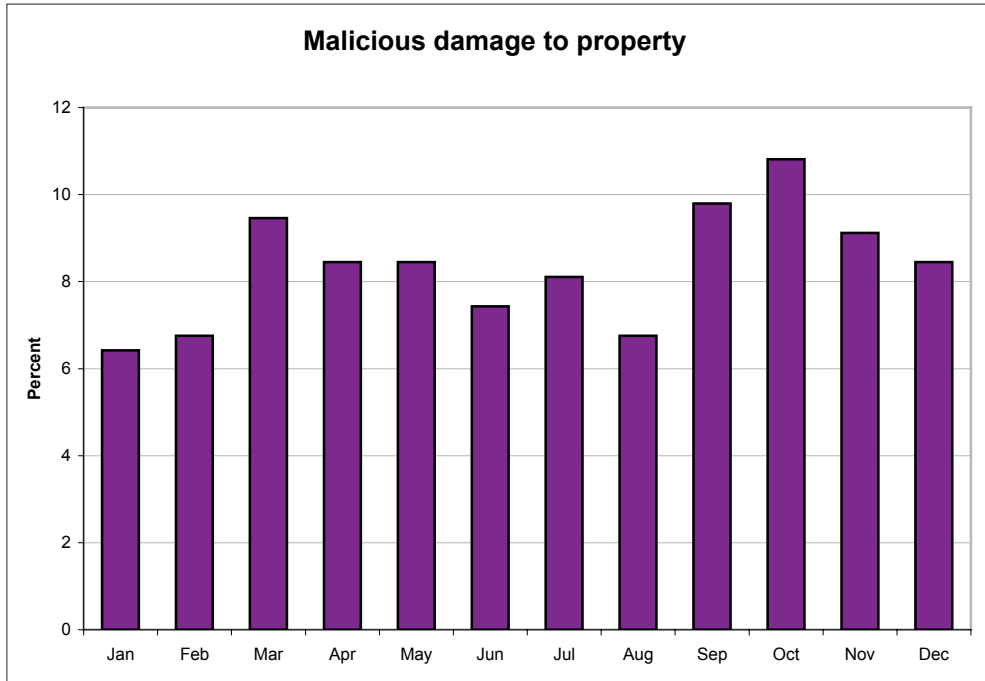


Figure 32. Proportion of malicious damage to property incidents by time of day and day of week

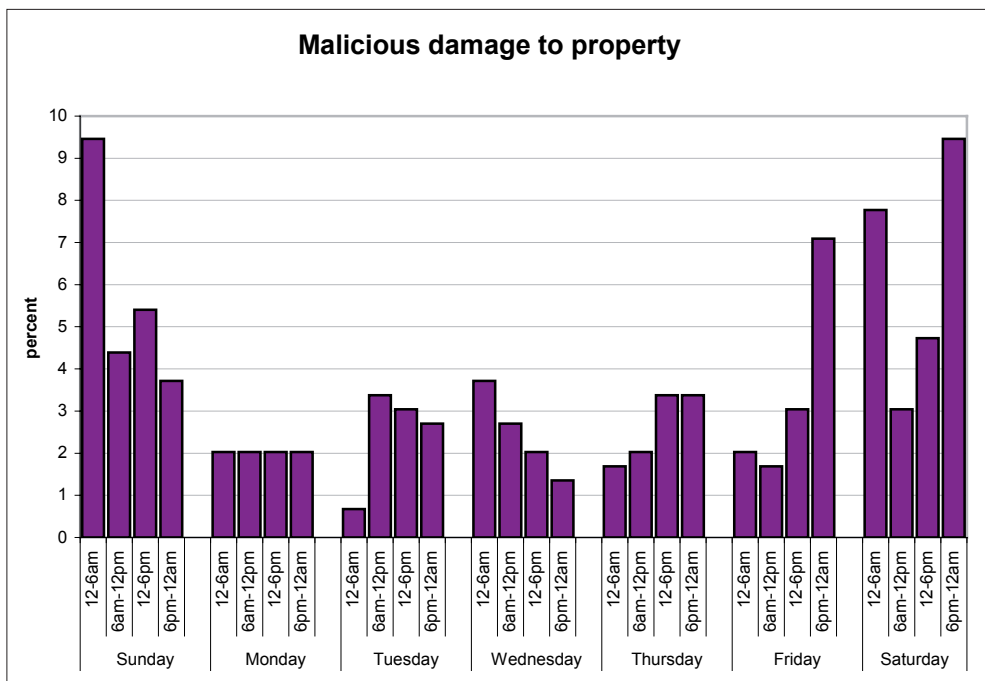
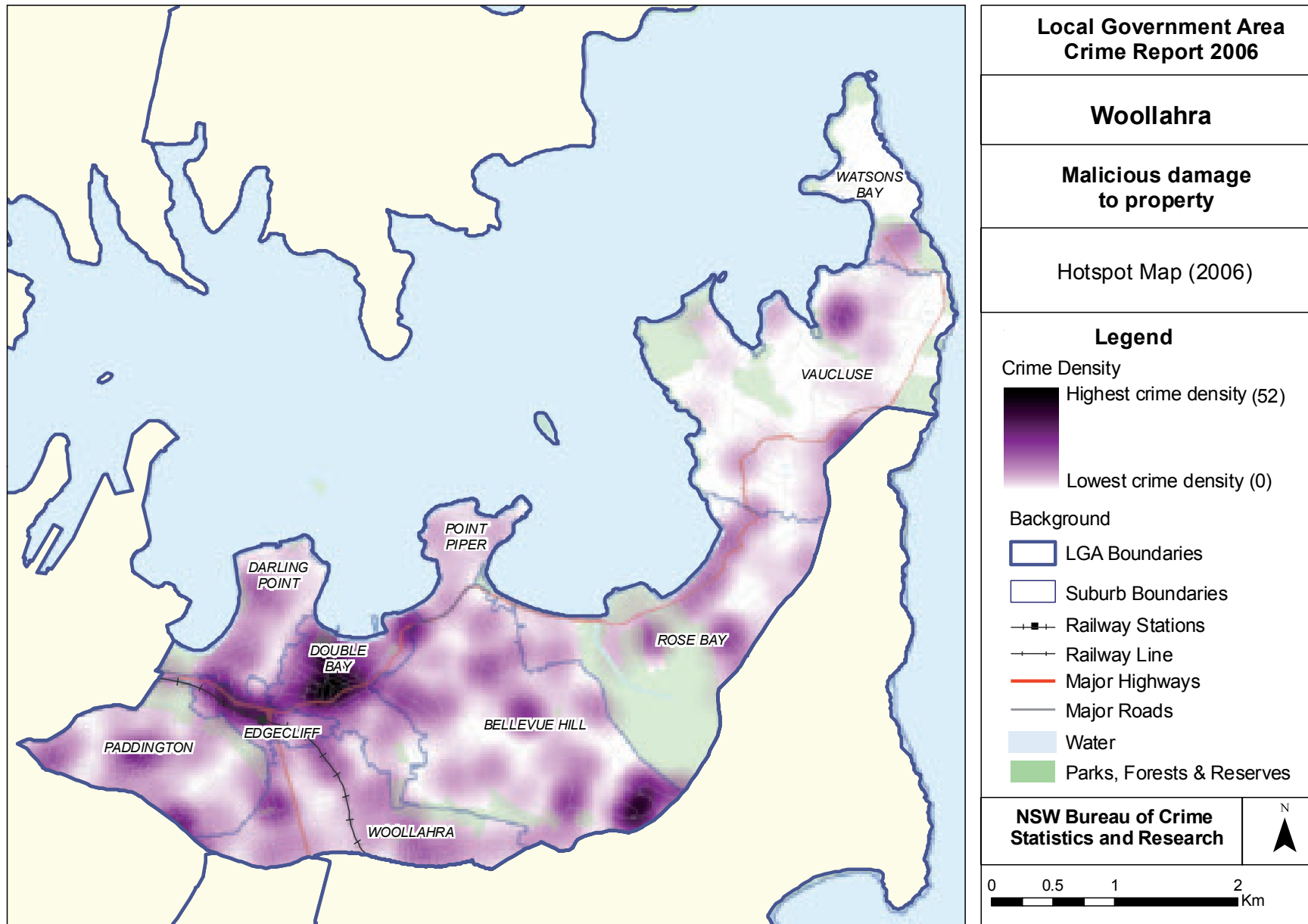


Figure 33. Hotspot map for malicious damage to property incidents



12. SELECTED OFFENCES BY PREMISES TYPE

Table 2. Number of incidents of selected offences recorded by NSW Police in the Woollahra LGA, by premises type, 2006

| <i>Premises* type</i> | <i>Assault - domestic violence related</i> | <i>Assault - non-domestic violence related</i> | <i>Sexual offences</i> | <i>Robbery</i> | <i>Break and enter - non-dwelling</i> | <i>Motor vehicle theft</i> | <i>Steal from motor vehicle</i> | <i>Steal from person</i> | <i>Malicious damage to property</i> |
|-----------------------|--------------------------------------------------------|------------------------------------------------------------|----------------------------|----------------|-----------------------------------------------|------------------------------------|-----------------------------------------|----------------------------------|---------------------------------------------|
| Adult entertainment | 0 | 0 | 0 | 0 | 0 | 0 | 0 | 0 | 0 |
| Financial institution | 0 | 0 | 0 | 1 | 0 | 1 | 0 | 0 | 0 |
| Office | 1 | 0 | 0 | 0 | 17 | 0 | 0 | 1 | 4 |
| Personal services | 1 | 1 | 0 | 0 | 10 | 0 | 1 | 0 | 9 |
| Retail/wholesale | 1 | 14 | 1 | 18 | 59 | 0 | 5 | 23 | 47 |
| Carpark | 1 | 4 | 0 | 1 | 1 | 19 | 111 | 1 | 40 |
| Education | 0 | 7 | 0 | 1 | 33 | 0 | 6 | 0 | 43 |
| Health | 0 | 0 | 0 | 0 | 4 | 0 | 0 | 2 | 2 |
| Industrial | 0 | 0 | 0 | 0 | 4 | 0 | 0 | 0 | 0 |
| Law enforcement | 0 | 1 | 0 | 0 | 0 | 0 | 0 | 0 | 1 |
| Licenced premise | 0 | 35 | 1 | 4 | 9 | 0 | 0 | 52 | 4 |
| Marine transport | 0 | 0 | 0 | 0 | 1 | 0 | 0 | 1 | 0 |
| Outdoor/public place | 6 | 84 | 8 | 39 | 1 | 216 | 454 | 35 | 299 |
| Recreation | 0 | 3 | 2 | 1 | 5 | 0 | 1 | 15 | 5 |
| Religious | 0 | 1 | 0 | 0 | 0 | 0 | 1 | 0 | 1 |
| Residential | 58 | 27 | 19 | 3 | 6 | 36 | 64 | 3 | 237 |
| Rural Industry | 0 | 0 | 0 | 0 | 0 | 0 | 0 | 0 | 0 |
| Transport | 0 | 2 | 0 | 0 | 1 | 0 | 1 | 0 | 5 |
| Utilities | 0 | 1 | 0 | 0 | 0 | 0 | 0 | 1 | 1 |
| Vehicle | 0 | 6 | 2 | 2 | 0 | 0 | 2 | 5 | 5 |
| Unknown | 0 | 0 | 0 | 0 | 0 | 0 | 1 | 0 | 2 |
| Total | 68 | 186 | 33 | 70 | 151 | 272 | 647 | 139 | 705 |

* See Appendix 2 for second-level premises type definitions.

13. AGE AND GENDER OF VICTIMS

Table 3. Age and gender of victims of selected offences recorded by NSW Police in the Woollahra LGA, 2006

| <i>Victim * gender</i> | <i>Victim* age</i> | <i>Assault - domestic violence related</i> | <i>Assault - non-domestic violence related</i> | <i>Robbery</i> | <i>Steal from person</i> |
|----------------------------|--------------------|------------------------------------------------|--------------------------------------------------------|----------------|------------------------------|
| Male | < 18 | 2 | 20 | 13 | 1 |
| | 18 - 19 | 0 | 7 | 2 | 1 |
| | 20 - 29 | 4 | 55 | 13 | 27 |
| | 30 - 39 | 9 | 45 | 8 | 8 |
| | 40 - 49 | 5 | 18 | 6 | 3 |
| | 50 - 59 | 5 | 19 | 4 | 2 |
| | 60 + | 1 | 6 | 5 | 3 |
| | Missing / unknown | 1 | 5 | 2 | 1 |
| | Total | 27 | 175 | 53 | 46 |
| Female | < 18 | 2 | 9 | 4 | 5 |
| | 18 - 19 | 2 | 0 | 4 | 3 |
| | 20 - 29 | 7 | 8 | 15 | 45 |
| | 30 - 39 | 16 | 15 | 8 | 26 |
| | 40 - 49 | 12 | 1 | 5 | 8 |
| | 50 - 59 | 10 | 4 | 6 | 9 |
| | 60 + | 2 | 6 | 2 | 9 |
| | Missing / unknown | 1 | 1 | 1 | 1 |
| | Total | 52 | 44 | 45 | 106 |
| Unknown | < 18 | 0 | 0 | 0 | 0 |
| | 18 - 19 | 0 | 0 | 0 | 0 |
| | 20 - 29 | 0 | 2 | 0 | 0 |
| | 30 - 39 | 0 | 0 | 0 | 0 |
| | 40 - 49 | 0 | 0 | 0 | 0 |
| | 50 - 59 | 0 | 0 | 0 | 0 |
| | 60 + | 0 | 0 | 0 | 0 |
| | Missing / unknown | 0 | 0 | 23 | 2 |
| | Total | 0 | 2 | 23 | 2 |
| Total | < 18 | 4 | 29 | 17 | 6 |
| | 18 - 19 | 2 | 7 | 6 | 4 |
| | 20 - 29 | 11 | 65 | 28 | 72 |
| | 30 - 39 | 25 | 60 | 16 | 34 |
| | 40 - 49 | 17 | 19 | 11 | 11 |
| | 50 - 59 | 15 | 23 | 10 | 11 |
| | 60 + | 3 | 12 | 7 | 12 |
| | Missing / unknown | 2 | 6 | 26 | 4 |
| | Total | 79 | 221 | 121 | 154 |

* This table does not give a count of unique individuals (see Note 8, page 9 for more information).

14. AGE AND GENDER OF PERSONS OF INTEREST

Table 4. Age and gender of persons of interest (POIs) proceeded against by police in relation to criminal incidents occurring in the Woollahra LGA, 2006

| <i>POI* gender</i> | <i>POI* age</i> | <i>Assault - domestic violence related</i> | <i>Assault - non-domestic violence related</i> | <i>Robbery</i> | <i>Break and enter - dwelling#</i> | <i>Break and enter - non- dwelling#</i> | <i>Motor vehicle theft#</i> | <i>Steal from motor vehicle#</i> | <i>Steal from retail store</i> | <i>Steal from person#</i> | <i>Malicious damage to property</i> |
|------------------------|-------------------|----------------------------------------------------|--------------------------------------------------------|----------------|--------------------------------------------|-------------------------------------------------|-------------------------------------|------------------------------------------|------------------------------------|-------------------------------|---------------------------------------------|
| Male | 10 - 17 | 2 | 3 | 1 | 0 | 4 | 0 | 0 | 0 | 0 | 22 |
| | 18 - 19 | 1 | 5 | 0 | 0 | 0 | 0 | 1 | 1 | 0 | 5 |
| | 20 - 29 | 1 | 22 | 0 | 4 | 5 | 3 | 0 | 3 | 2 | 6 |
| | 30 - 39 | 8 | 6 | 11 | 2 | 1 | 3 | 2 | 4 | 2 | 3 |
| | 40 + | 13 | 15 | 0 | 1 | 1 | 1 | 1 | 0 | 0 | 3 |
| | Missing / unknown | 0 | 1 | 0 | 0 | 0 | 0 | 0 | 0 | 0 | 0 |
| | Total | | 25 | 52 | 12 | 7 | 11 | 7 | 4 | 8 | 4 |
| Female | 10 - 17 | 0 | 1 | 0 | 0 | 0 | 0 | 0 | 2 | 0 | 1 |
| | 18 - 19 | 0 | 2 | 0 | 0 | 0 | 0 | 0 | 0 | 0 | 0 |
| | 20 - 29 | 1 | 0 | 0 | 0 | 0 | 0 | 0 | 1 | 0 | 0 |
| | 30 - 39 | 6 | 2 | 0 | 0 | 0 | 0 | 0 | 3 | 0 | 2 |
| | 40 + | 0 | 0 | 0 | 0 | 0 | 0 | 0 | 1 | 0 | 0 |
| | Missing / unknown | 1 | 0 | 0 | 0 | 0 | 0 | 0 | 1 | 0 | 0 |
| | Total | | 8 | 5 | 0 | 0 | 0 | 0 | 8 | 0 | 0 |
| Unknown | 10 - 17 | 0 | 0 | 0 | 0 | 0 | 0 | 0 | 0 | 0 | 0 |
| | 18 - 19 | 0 | 0 | 0 | 0 | 0 | 0 | 0 | 0 | 0 | 0 |
| | 20 - 29 | 0 | 0 | 0 | 0 | 0 | 0 | 1 | 0 | 0 | 0 |
| | 30 - 39 | 0 | 0 | 0 | 0 | 0 | 0 | 0 | 0 | 0 | 0 |
| | 40 + | 0 | 0 | 0 | 0 | 0 | 0 | 0 | 0 | 0 | 0 |
| | Missing / unknown | 0 | 0 | 0 | 0 | 0 | 0 | 0 | 0 | 0 | 0 |
| | Total | | 0 | 0 | 0 | 0 | 0 | 0 | 1 | 0 | 0 |
| Total | 10 - 17 | 2 | 4 | 1 | 0 | 4 | 0 | 0 | 2 | 0 | 23 |
| | 18 - 19 | 1 | 7 | 0 | 0 | 0 | 0 | 1 | 1 | 0 | 5 |
| | 20 - 29 | 2 | 22 | 0 | 4 | 5 | 3 | 1 | 4 | 2 | 6 |
| | 30 - 39 | 14 | 8 | 11 | 2 | 1 | 3 | 2 | 7 | 2 | 5 |
| | 40 + | 13 | 15 | 0 | 1 | 1 | 1 | 1 | 1 | 0 | 3 |
| | Missing / unknown | 1 | 1 | 0 | 0 | 0 | 0 | 0 | 1 | 0 | 0 |
| | Total | | 33 | 57 | 12 | 7 | 11 | 7 | 16 | 4 | 42 |

* This table does not give a count of unique individuals (see Note 8, page 9 for more information).

POI characteristics should be treated cautiously for offence types that have low clear-up rates.

15. ALCOHOL-RELATED CRIME

Table 5. Number and proportion of selected offences flagged as alcohol related by police in the Woollahra LGA, 2006

| <i>Offence type</i> | | <i>Alcohol Related*</i> | <i>Not Alcohol Related</i> | <i>Total</i> |
|-----------------------------------------|-----|-------------------------|----------------------------|--------------|
| Assault - domestic violence related | No. | 36 | 32 | 68 |
| | % | 52.9 | 47.1 | 100.0 |
| Assault - non-domestic violence related | No. | 81 | 105 | 186 |
| | % | 43.5 | 56.5 | 100.0 |
| Robbery | No. | 9 | 61 | 70 |
| | % | 12.9 | 87.1 | 100.0 |
| Break and enter - dwelling | No. | 0 | 408 | 408 |
| | % | 0.0 | 100.0 | 100.0 |
| Break and enter - non-dwelling | No. | 4 | 147 | 151 |
| | % | 2.6 | 97.4 | 100.0 |
| Motor vehicle theft | No. | 2 | 270 | 272 |
| | % | 0.7 | 99.3 | 100.0 |
| Steal from motor vehicle | No. | 3 | 644 | 647 |
| | % | 0.5 | 99.5 | 100.0 |
| Steal from retail store | No. | 1 | 96 | 97 |
| | % | 1.0 | 99.0 | 100.0 |
| Steal from person | No. | 11 | 128 | 139 |
| | % | 7.9 | 92.1 | 100.0 |
| Malicious damage to property | No. | 30 | 675 | 705 |
| | % | 4.3 | 95.7 | 100.0 |

* *It is difficult for police to make a determination about the involvement of alcohol in a criminal incident if the identity of the offender is not known. This is common for many property offences and these data should therefore be interpreted with this in mind (see Note 9, page 10 for more information).*

APPENDIX 1: OFFENCE CLASSIFICATIONS

This appendix broadly defines the offence classifications used in this report. As mentioned in Section 5, the offence classification used by the Bureau of Crime Statistics and Research is based on the Australian Bureau of Statistics' Australian Standard Offence Classification (ABS 1997 Cat. No. 1234.0).

This appendix includes the NSW Police Force incident categories that comprise the classifications used in this report.

MURDER

The Australian Bureau of Statistics (ABS) defines *murder* as "the unlawful killing of another person where there is either the intent to kill, the intent to cause grievous bodily harm, with the knowledge that it was probable that death or grievous bodily harm would occur (reckless indifference to life), or without intent to kill in the course of committing a crime (felony murder)".

Incidents classified in this report as *murder* include only the police incident category of murder.

ASSAULT

The ABS defines *assault* as "the direct (and immediate/confrontational) infliction of force, injury or violence upon a person or persons or the direct (and immediate/confrontational) threat of force, injury or violence where there is an apprehension that the threat could be enacted".

Incidents classified by the Bureau of Crime Statistics and Research as *assault* include the following police incident categories:

- actual bodily harm
- common assault
- assault officer
- grievous bodily harm (including malicious wounding) and
- shoot with intent other than to murder.

Assault can be flagged by police as being *domestic violence related* or *alcohol related*.

SEXUAL ASSAULT

The 'sexual assault' category employed by the Bureau of Crime Statistics and Research cannot be directly compared with the definition employed by the ABS.

Incidents classified by the Bureau of Crime Statistics and Research as sexual assault include the following police incident categories:

- sexual assault
- aggravated sexual assault and
- assault with intent to have sexual intercourse.

INDECENT ASSAULT, ACT OF INDECENCY AND OTHER SEXUAL OFFENCES

The 'indecent assault, act of indecency and other sexual offences' category employed by the Bureau of Crime Statistics and Research cannot be directly compared with the sexual offence definition employed by the ABS.

Incidents classified by the Bureau of Crime Statistics and Research as indecent assault, act of indecency and other sexual offences include the following police incident categories:

- act of indecency
- aggravated act of indecency
- aggravated indecent assault
- bestiality
- carnal knowledge
- incest
- indecent assault
- indecent communication
- peep or pry
- wilful and obscene exposure and
- other sexual offence.

ROBBERY

The ABS defines *robbery* as "the unlawful taking of property, with intent to permanently deprive the owner of the property, from the immediate possession, control, custody or care of a person, accompanied by the use, and/or threatened use of immediate force or violence".

Incidents classified by the Bureau of Crime Statistics and Research as *robbery* include the following police incident categories:

- armed robbery
- demand money with menaces
- robbery
- robbery with aggravation
- robbery with wounding and
- other robbery.

In this and other publications by the Bureau of Crime Statistics and Research, *robbery* is further categorised as *robbery without a weapon*, *robbery with a firearm* or *robbery with a weapon not a firearm*.

BREAK AND ENTER

The ABS defines *break and enter* (and *unlawful entry with intent/burglary*) as “the unlawful entry of a structure with the intent to commit an offence where the entry is either forced or unforced”.

Incidents classified by the Bureau of Crime Statistics and Research as *break and enter* include the following police incident categories:

- break, enter and steal
- break and enter with intent to steal
- break, enter and commit other felony and
- break and enter with intent to commit other felony.

Break and enter incidents can occur in *dwellings* or *non-dwellings*. *Dwellings* include residential premises such as houses, home units or villas. *Non-dwellings* include premises where people do not usually reside such as retail premises, wholesale premises, educational premises, industrial premises, recreational premises etc.

THEFT AND STEALING

The ABS defines *theft* as “the unlawful taking or obtaining of money or goods not involving the use of force, threat of force or violence, coercion or deception, with the intent to permanently or temporarily deprive the owner or possessor of the use of the money or goods, or the receiving or handling of money or goods obtained unlawfully”.

Motor vehicle theft

The ABS defines *motor vehicle theft* as “the taking of another person’s motor vehicle illegally and without permission with the intent of permanently depriving the owner or possessor of the use of the motor vehicle.”

Incidents classified by the Bureau of Crime Statistics and Research as *motor vehicle theft* include only the police incident category ‘stolen vehicle/vessel’.

Steal from motor vehicle

The ABS defines *theft of motor vehicle parts or contents* as “the unlawful taking of parts or contents from another person’s motor vehicle illegally and without permission”.

Incidents classified by the Bureau of Crime Statistics and Research as *steal from motor vehicle* include only the police incident category ‘steal from motor vehicle’.

Steal from retail store

The ABS defines *theft from retail premises* as “theft from retail premises of goods for sale, other than motor vehicles, by avoiding payment for those goods. This may also include the taking from retail premises of items not for sale, such as tools, equipment or furnishings”.

Incidents classified by the Bureau of Crime Statistics and Research as *steal from retail store* include only the police incident category ‘steal from retail store’.

Steal from dwelling

Steal from dwelling incidents are not separately defined by the ABS but typically involve stealing from parts of residential premises without breaking into the direct living space (e.g. stealing from verandas, balconies, driveways, sheds, gardens, clotheslines, carports, garages).

Incidents classified by the Bureau of Crime Statistics and Research as *steal from dwelling* include the following police incident categories:

- steal from dwelling and
- other stealing.

Steal from person

The ABS defines *theft from person* as “taking money or personal goods, whether from the immediate possession or control of a person without the use of force, threat of force or violence or putting the victim in fear”.

Incidents classified by the Bureau of Crime Statistics and Research as *steal from person* include only those police incident categories defined as ‘steal from person’.

FRAUD

The Bureau of Crime Statistics and Research fraud category is most closely aligned with the ABS *fraud, forgery or false financial instruments*, defined as “inducing a course of action, by deceit or other dishonest conduct, with the intent to obtain money or other benefit or to evade a liability. The making, use or possession of a forged financial instrument with an intention to obtain an advantage”.

Incidents classified by the Bureau of Crime Statistics and Research as *fraud* include the following police incident categories:

- company corporate offence
- computer crime
- copyright/intellectual property/trademark offences
- corrupt commission/practices
- corrupt payment (receive or pay)
- counterfeit currency
- deception offence
- embezzlement
- fail to pay
- fraudulent appropriation
- larceny clerk/servant/bailee
- make/use false instruments
- misappropriate cheque/funds
- possess false instruments
- publish false misleading statement
- receiving (fraud related) and
- other fraud.

MALICIOUS DAMAGE TO PROPERTY

The ABS defines *property damage and environmental pollution* as “the wilful and unlawful destruction, damage or defacement of public or private property or the pollution of property or a definable entity held in common by the community”.

Incidents classified by the Bureau of Crime Statistics and Research as *malicious damage to property* include the following Police incident categories:

- graffiti
- malicious damage to property
- public place – damage fountain/wall etc. and
- public place – damage shrine/monument.

APPENDIX 2: SECOND-LEVEL PREMISES TYPE CATEGORIES

Most of the premises types listed in Table 2 have a further definitional level. These are listed below.

Adult entertainment includes brothels, declared common gaming house, declared disorderly house, escort agency, gambling club, gaming house, homosexual club, indecent movies, indecent publication, massage parlour, sex shop, other.

Financial institution includes bank, building society, credit union, health insurance, insurance/superannuation, moneylender, stock exchange etc., other.

Office includes consulate, council chambers, electorate office, government office, parliament house, private office, real estate agency, other.

Personal services includes barber, beauty salon, dry cleaning, funeral parlour, hairdressing, laundromat, photographic studio, tailor, tattoo shop, other.

Retail/wholesale includes second hand dealer, art and craft, art gallery, boat retailer, book shop, bread shop, butcher, café, cafeteria, car yard, chemist, clothing shop, department store, electronic/sales, fabric shop, florist, fruit and veg shop, furniture store, general store, general wholesale, hardware store, homeware store, jewelry shop, kiosk, markets, milkbar, motor dealer, music store, newsagent, nursery, paper stand, pawnbrokers, photography shop, restaurant, saleyard, service station, shoe shop, shopping complex, showroom, sports store, stationery, supermarket, supermarket servo, takeaway food, tobacconist, toy store, travel agent, video hire/sales, wrecking yard, other.

Carpark includes beach parking area, business/commercial, commuter (excl railway), entertainment premises, hospital, parking station, railway, residential, restaurant/take away, shopping centre, sports ground, other.

Education includes CAE, conservatorium of music, library, preschool, school, TAFE, university, other.

Health includes ambulance station, baby health centre, dentist surgery, doctor surgery, drug referral centre, drug rehabilitation centre, hospital, laboratory, medical centre, medically supervised injecting room, nursing home, optical sales/optometrist, psychiatric centre, vet surgery, other.

Industrial includes building site, building site/shed, factory, mill, mine, mineral claim, petrol depot, quarry, refinery, repository, storage, warehouse, workshop, other.

Law enforcement includes call box, correctional centre, court, customs, defence, detention centre, police station, other police building, remand centre, other.

Licensed premises includes bottle shop, club, hotel/pub, licensed restaurant, nightclub, wine bar, other.

Marine transport includes boatshed, container terminal, dock/port, jetty, marina, public passenger terminal, wharf, other.

Outdoor/public place includes air, anchorage, bay, beach, billabong, bus stop, bushland/scrub, camping area, caravan park, cemetery, creek, crown land, crown land/national park, dressing shed, footpath, forest, harbour, lake, national park, ocean, oyster farm, park, public garden, public toilet, reserve, river, road/street, sea, state recreation area, taxi rank, vacant block, other.

Recreation includes amphitheatre, amusement park, art gallery (excl retail), blue light disco, bowling alley, casino, cinema, circus, club, dance studio, golf course, gymnasium, hall, lotteries office, museum, pavilion, racecourse, showground, skating rink, sporting centre, sports ground, squash court, swimming pool (public), Sydney entertainment centre, tv/film studio, tennis court (public), theatre live, Totalizator Agency Board, video arcade, wildlife sanctuary, zoo, other.

Religious includes cathedral, chapel, church, convent, monastery, mosque, presbytery, rectory, synagogue, temple, other.

Residential includes accommodation, non-dwelling, dwelling.

Rural industry includes barn, dam (private), farmland, machinery shed, orchard, paddock, shearers quarters, shearing shed, silo, stock & station agent, stockyard, storage shed, wool/hide/skin, other.

Transport includes airport, bus depot, bus passenger terminal, freight depot, rail building, rail station, railway siding, railway terminal, other.

Utilities includes council depot, dam/water supply, electricity, fire station, gas, lighthouse, mail exchange, pollution works, post office, reservoir, sewerage & stormwater drains, telecom depot, telephone booth, other.

Vehicle includes aircraft, aquacab, bus, ferry, private marine vessel, other passenger marine vessel, private motor vehicle, taxi, train, other vehicle.

local government area
crime report series

Woollahra 2006
